

# Yale Center BEIJING | 耶鲁北京中心

ANNUAL REPORT

2019 – 2020

# ANNUAL REPORT

## 2019 – 2020

### Table of Contents

- 4 A New Chapter for the History of Yale and China
- 6 Building Bridges Between the U.S. and China...  
One Leader at a Time
- 22 Impactful Engagement During COVID-19
- 25 Special Thanks

We were delighted to show our Emmy award-winning film *Journey of the Universe* with Chinese subtitles at the Yale Center Beijing. The staff was immensely helpful in hosting the Confucian scholars who responded to the film and in live streaming the event that reached over 77,000 Chinese.

— Mary Evelyn Tucker

Senior Lecturer and Senior Research Scholar,  
Yale School of the Environment



The Yale Center Beijing proved to be an invaluable resource in my outreach travels to China, in particular to Beijing. Whether it was helping me connect with administrators at local schools, hosting an evening program for local school counselors and officials, or even arranging all of my ground transportation, the Center and its staff made my travels in Beijing enjoyable, engaging, and incredibly rewarding. I'm grateful to have the ability to rely on such professionalism and expertise when representing Yale College throughout China.

— John Yi '13

Associate Director of Undergraduate Admissions,  
Yale College





The Yale Center Beijing is a vital source of engagement between China and the scholars and students of Yale University. Its role is only becoming **more important in an age of global challenges**, where the exchange of ideas, knowledge, and understanding is critical to **developing solutions that benefit all**. The Yale University community owes a deep debt of gratitude for the leadership provided by Carol Li Rafferty and YCB's Advisory Committee led by Neil Shen.

— **Kerwin Charles**  
Indra K. Nooyi Dean & Frederic D. Wolfe Professor of Economics, Policy, and Management, Yale School of Management

It is an incredible privilege to work with the team at the Yale Center Beijing. **The growth and impact of the Center's work in only five years has been staggering**, and I know the Center will only grow its influence and strengthen the incredibly productive ties between China and Yale in the years to come. YCB is my home in Beijing and I am inspired every time I visit.

— **Joel Getz**  
Deputy Dean, Alumni, Development, and Special Initiatives, Yale School of Management

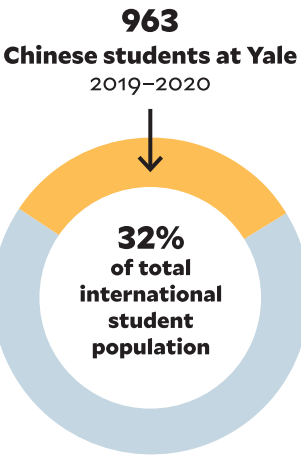


## A New Chapter for the History of Yale and China

**Founded in 2014** as Yale University’s first and only university-wide center outside of the United States, Yale Center Beijing (YCB) provides a dedicated facility for Yale’s schools and programs to engage with their Chinese partners and enables Yale to deepen its nearly two centuries-long history of collaboration and exchange with China.

Yale’s long history of welcoming students from China is unparalleled in the West. In 1854, Yung Wing graduated from Yale College, becoming the first person from China to earn a degree from an American university. This pivotal event served as an important milestone for fostering people-to-people exchange between China and the U.S.

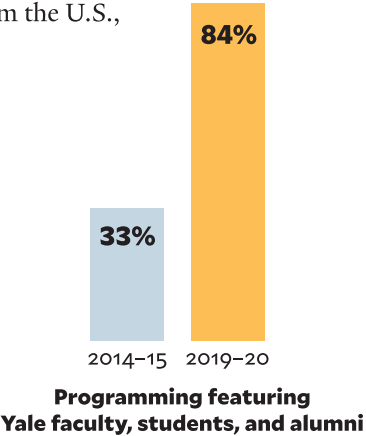
Following in Yung Wing’s footsteps, Yale graduates and faculty founded the Yale-China Association in 1901 and continued to build bridges between the U.S. and China through service, institution-building, and collaborations that culminated in the establishment of the Yali Middle School, the College of Yale-in-China, and the Xiangya Hospital and Schools of Medicine and Nursing.



As the U.S. and China formalized full diplomatic relations in 1979, educational and cultural exchanges between the two countries flourished. Over the years, Yale University has witnessed a dramatic increase in its Chinese student population, **from 22 in 1872, to 131 in 1989**, ten years after China and the U.S. re-established formal diplomatic ties. Most recently, in 2019–2020, **the number of Chinese students at Yale grew to 963, accounting for 32% of the total international student population** and representing the largest international student group at the University. Additionally, over 150 faculty members are pursuing a broad array of research, educational, and training activities in, and related to, China, through collaborations with local partners, spanning across almost 30 Chinese cities.

**Since its establishment in 2014**, YCB has become one of Yale University’s key global hubs for activities and collaborations in China and the Asia-Pacific region. Widely recognized as a convening forum for decision makers and thought leaders, YCB continues to advance Yale University’s mission to improve our world by bringing together luminaries from the U.S., China, and beyond for dialogues on issues of import.

**From July 1, 2019 to June 30, 2020**, YCB welcomed **nearly 250 speakers** to contribute to programming across various disciplines. Programming that featured Yale faculty, students, and alumni **increased from 33% of the Center’s activities in 2014–2015 to 84% in 2019–2020**. YCB has also actively engaged with Chinese society via social media. As of **June 30, 2020**, YCB managed Weibo accounts that engage a total of **680,000+ followers**, while YCB’s WeChat account has over **65,000 subscribers**.



▲ YCB’s Huang History Wall


**Throughout the COVID-19 pandemic**, YCB has continued to amplify Yale University’s impact by arranging for media interviews of Yale faculty and translating and publishing timely articles by Yale professors and experts. Since the start of the pandemic, YCB has posted **659 articles and videos** on Chinese social media platforms, garnering more than **5.6 million views**.

**Additionally, with its versatile meeting rooms and state-of-the-art technology**, YCB is working closely with Yale College and Yale’s other schools to provide a welcoming and functional space for community gatherings and intellectual exchanges among Yale students, scholars, and alumni from China and elsewhere around the world during the pandemic.



▲ Tai Chi at YCB’s Shen Commons





## Building Bridges Between the U.S. and China ... One Leader at a Time

Since its inception, Yale Center Beijing,  
as Yale University's home in China, has provided  
an important hub for intellectual exchange  
and leadership development for established and  
aspiring leaders from around the world.

Key programs that YCB leads or supports include:

**Yale-Sequoia Capital China  
Leadership Program**



**Yale Young Global Scholars (YYGS)  
—Beijing Program**



**Maurice R. Greenberg  
Distinguished Colloquium**



**Yale China Fund for Emotional Intelligence**



**Yale Starlight Science Series**



Yale-Sequoia Capital China Leadership Program

As a pioneering collaboration between a Chinese venture capital/private equity firm and an American university, the Yale-Sequoia Capital China Leadership Program was established in 2016 to groom the next generation of global business leaders. The program has since welcomed three cohorts of participants with a total of 116 founders and CEOs from Sequoia Capital China’s portfolio companies.

► **JULY 2019** David Bach ’99, then Deputy Dean and Professor in the Practice of Management at the Yale School of Management (SOM), Chen Zhiwu ’90 PhD, former Professor of Finance at Yale, and Liu Kun, Visiting Associate Professor of Psychiatry at the Yale School of Medicine, interacted with close to 40 technology company founders and senior executives at the opening ceremony of the 3rd Yale-Sequoia Capital China Leadership Program.

The distinguished academics and practitioners who have contributed to the program include:

- Neil Nan Peng Shen ’92 MA**  
YCB Executive Council Chairman and  
Founding and Managing Partner  
at Sequoia Capital China
- Bob Xu**  
YCB Executive Council Vice Chair and  
Founder and Managing Partner at ZhenFund
- Marvin Chun**  
Dean of Yale College and Richard M. Colgate  
Professor of Psychology
- Tamar Gendler ’87**  
Dean of the Faculty of Arts and Sciences  
and Vincent J. Scully Professor of Philosophy and  
Professor of Psychology and Cognitive Sciences
- Shelly Kagan**  
Clark Professor of Philosophy
- Laurie Santos**  
Professor of Psychology
- Robert Shiller**  
Nobel Prize Laureate and  
Sterling Professor of Economics



▼ **SEPTEMBER 2019** 30 participants from the Yale-Sequoia Capital China Leadership program spent a week at Yale and in New Haven, reveling in an immersive experience that incorporated rowing practice and scintillating discussions with John Gaddis, Robert A. Lovett Professor of Military and Naval History, Brian Scassellati, Professor of Computer Science and Cognitive Science, Debra Fischer, Eugene Higgins Professor of Astronomy, Amy Chua, John M. Duff, Jr. Professor of Law, as well as other members of the Yale faculty.





**JULY–AUGUST 2019** The 4th Yale Young Global Scholars (YYGS)–Beijing program on “Asia in the 21st Century” took place over the course of two weeks. 90 high school students from 27 different countries across all 6 continents discussed the most pressing issues facing Asia and the world.



▲ **AUGUST 2019** Li Yifei, financier and Rockefeller Foundation Trustee, discussed China’s role in the world during the YYGS–Beijing program.

### ***Yale Young Global Scholars (YYGS) –Beijing Program***

Launched in 2016, the Yale Young Global Scholars (YYGS)–Beijing Program offers an intensive and interdisciplinary summer pre-collegiate experience in Beijing for high-achieving and exceptional students interested in gaining a deeper understanding of the unique economic, developmental, and security challenges within the Asia region. In the past 4 years, **close to 400 students from nearly 30 countries** have participated in the program, during which they engaged with speakers such as Edward Wittenstein ’04, ’12 JD, Deputy Director for Leadership Programs and Lecturer at Yale’s Jackson Institute for Global Affairs, Wang Xingzui, ’13 Yale Greenberg World Fellow and Vice President of the China Foundation for Poverty Alleviation, Jian Yi, ’09 Yale Greenberg World Fellow and documentary filmmaker, Lina Getachew Ayenew ’10, ’11 MPH, author and social entrepreneur, and Li Yifei, former Country Chair of Man Group China and member of The Rockefeller Foundation Board of Trustees.

### ***Maurice R. Greenberg Distinguished Colloquium***

Thanks to the generous support of Maurice R. Greenberg, YCB Advisory Committee Member and Chairman & CEO of Starr Companies, YCB launched the Maurice R. Greenberg Distinguished Colloquium in 2019.

As of June 30, 2020, YCB has hosted a total of 18 events as part of the series, which feature thought leaders from all sectors of society who, in the spirit of Maurice R. Greenberg, have played critical roles in building bridges among China, U.S., and the world.



▲ **OCTOBER 2019** Robert Blocker, Dean of the Yale School of Music, Renée Fleming, renowned soprano and member of the Schwarzman Center Advisory Board, and other experts explored the relationship between music and human health in a discussion on “Music and the Mind.”





▲ JULY 2019 Stephen Roach, Senior Fellow at Yale’s Jackson Institute of Global Affairs and Senior Lecturer at Yale SOM, spoke on “U.S.-China Conflict: The Post-Osaka Assessment.”



◀ AUGUST 2019 Paul Freedman, Chester D. Tripp Professor of History, and Chen Xiaoqing, noted writer and director of *A Bite of China*, the most watched food documentary series in China, engaged with a sold-out audience on “Food and Cuisine in Global History and Culture.”



I am grateful to the Yale Center Beijing for providing an opportunity to learn about the cuisine of China and to meet people who study food and cook. My time in Beijing as well as travel to other parts of China introduced me to a wide range of experts involved with culinary as well as ecological and social issues. **I came back determined to learn more and to reinforce connections between China and the U.S. in spite of current obstacles.**

— Paul Freedman  
Chester D. Tripp Professor of History, Yale University

Many thanks to Yale Center Beijing for inviting me to discuss Eastern and Western cuisines with Professor Paul Freedman of Yale University. Food serves as a universal language between civilizations, and those who study food are the messengers across cultures. Professor Freedman’s research has been very helpful and inspiring for my own creative work. Despite the vast distance between us, this conversation gave us the **opportunity to learn more about each other’s history and culture.** I look forward to more exchanges and collaborations in the future.

— Xiaoqing Chen  
Documentary Filmmaker, Food Writer



With the onset of the COVID-19 pandemic, YCB swiftly switched to online programming and continued to host an exciting array of activities featuring Yale luminaries. As a result, YCB programming has increased its reach with an audience base that extends beyond Beijing to the rest of China, and even elsewhere in the world. Some of the Yale faculty members who have shared their latest work and books during these unusual times include:

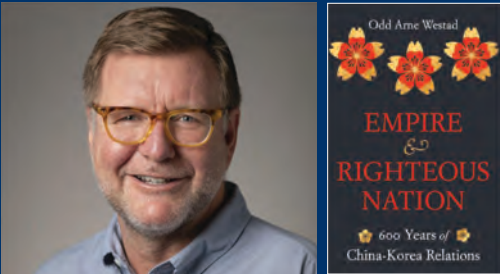
▼ MAY 2020 Valerie Hansen, Stanley Woodward Professor of History, discussed her new book *The Year 1000: When Globalization Began*.



The COVID-19 shutdown meant that my talk at the Beijing Center was a Zoom conversation with Professor Lu Xiqi, twice a visiting scholar at Yale and a long-time collaborator of mine at Wuhan University, followed by Q&A with the audience. Everything went smoothly: the arrangements were impeccable, the staff professional, and Devin Lau an excellent host. We reached a much larger audience than we would have with a live event.

— Valerie Hansen  
Stanley Woodward Professor of History,  
Yale University

▼ MAY 2020 Odd Arne Westad, Elihu Professor of History and Global Affairs, spoke on his forthcoming book *Empire and Righteous Nation: 600 Years of China-Korea Relations*.



Yale Center Beijing is a much needed link between the University and all of its activities in China — it has a wonderfully professional staff, great facilities, and a tremendous network of Yale alumni and friends in the city and beyond.

— Odd Arne Westad  
Elihu Professor of History and Global Affairs,  
Yale University



Unni Karunakara



Ma Yansong



Matthew Barney



Steven Smith



Francesco Casetti



Derek Chang



Yuri Kordonsky



Mary Evelyn Tucker



Ian Shapiro



David Bromwich

Other Greenberg Distinguished Colloquium speakers include:

March 2019 **Unni Karunakara** '95 MPH, former International President of Doctors Without Borders and Assistant Clinical Professor at the Yale School of Public Health, on “Leadership in Crisis”

May 2019 **Derek Chang** '89, then CEO of NBA China, on “The Power of Sport, Innovation, and Diplomacy”

June 2019 **Ma Yansong** '02 MArch, Founder and Partner of MAD Architects, on “What Will Cities of the Future Look Like?”

June 2019 **Yuri Kordonsky**, Professor of Directing at the Yale School of Drama, and Liu Tianchi, actress and Assistant Professor of Performing Arts at the Central Academy of Drama, on “Chinese and Western Theatrical Arts”

September 2019 **Matthew Barney** '89, contemporary artist, on his exhibition *Redoubt*

October 2019 **Mary Evelyn Tucker**, Senior Lecturer and Senior Research Scholar at the Yale School of the Environment, on “Confucianism and Cosmology: How Does Chinese Thought Energize and Elevate an Evolutionary Worldview?”

May 2020 **Steven Smith**, Alfred Cowles Professor of Political Science and Professor of Philosophy, on “In Defense of Patriotism”

June 2020 **Ian Shapiro** '83 PhD, '87 JD, Sterling Professor of Political Science, on “The Wolf at the Door: The Menace of Economic Insecurity and How to Fight It”

June 2020 **Francesco Casetti**, Thomas E. Donnelly Professor of Humanities and Film and Media Studies, on “Life on Screens During a Pandemic”

June 2020 **David Bromwich** '73, '77 PhD, Sterling Professor of English, on “How Words Make Things Happen”



My time interacting with early childhood educators from across China at Yale Center Beijing was excellent. Their staff were organized, kind, and considerate and provided a warm and welcoming experience for guests.

— **Craig Bailey**  
Director of Early Childhood, Yale Center for Emotional Intelligence (YCEI), and Associate Research Scientist, Yale Child Study Center



**Yale China Fund for Emotional Intelligence**

Established in 2017, the Yale China Fund for Emotional Intelligence aims to translate, adapt, pilot, and test the efficacy of the Yale Center for Emotional Intelligence’s (YCEI) RULER (Recognizing, Understanding, Labeling, Expressing, Regulating) approach to social and emotional learning (SEL) in Chinese kindergartens. This project has been made possible through the generous support of Neil Nan Peng Shen ’92 MA, YCB Executive Council Chairman and Founding and Managing Partner

at Sequoia Capital China, and Liang Meng ’97 MPPM, YCB Advisory Committee Member, Yale SOM Donaldson Fellow, and Founding Managing Partner at Ascendent Capital Partners. In collaboration with YCB, YCEI, a department within the Child Studies Center at the Yale School of Medicine, has hosted workshops that help Chinese educators and students incorporate concepts of emotional regulation in the classroom and cultivate the emotional skills that future generations need to succeed in life.

**The Yale China Fund for Emotional Intelligence’s Advisory Board Members include:**

- Neil Nan Peng Shen ’92 MA**  
YCB Executive Council Chairman and Founding and Managing Partner at Sequoia Capital China (Chair)
- Liang Meng ’97 MPPM**  
YCB Advisory Committee Member, Yale SOM Donaldson Fellow, and Founding Managing Partner at Ascendent Capital Partners (Vice Chair)
- Joel Getz**  
Deputy Dean, Alumni, Development, and Special Initiatives, Yale School of Management
- Dejian Liu**  
Chairman, Netdragon and Eternity
- Poman Lo**  
Vice Chairman, Century City Holdings and Regal Hotels
- Ralph Parks**  
Former Chairman, JPMorgan Asia
- Carol Li Rafferty ’00**  
Executive Director, Yale Center Beijing
- Philip Sohmen**  
CEO, World-Wide Education Group, and Co-Founder & Deputy Chairman, YK Pao School
- Fawn Wang**  
Director for East Asia, Office of International Affairs, Yale University
- Peggy Yeoh**  
Founder and Director, Dalton School Hong Kong



▲ **NOVEMBER 2019** The Yale Center for Emotional Intelligence (YCEI) and the Northeast Normal University (NENU) Psychology Department co-hosted a series of workshops on “RULER: Creating Emotionally Intelligent Schools” at YCB. Craig Bailey, Director of Early Childhood at the YCEI and Associate Research Scientist at the Yale Child Study Center, and other YCEI colleagues gathered with educators from NENU and guests invited by NENU, including the Kindergartens Affiliated with NENU, Hunan Normal University, and the Fujian Preschool Teachers College, the Ministry of Education Training Center for Kindergarten Principals, UNICEF (United Nations Children’s Fund), and over 30 other groups.





I was impressed by the role Yale Center Beijing plays as a **convener of cross-cutting intellectual discussion in China**. This is certainly the case with Global Health where the Center serves as the home base for Fulbright scholars, doctoral students, and Yale professors who are stationed in Beijing and pursuing scholarship across the scope of health-related disciplines. **The session on emerging infectious diseases, which was held three months prior to the beginning of the COVID-19 pandemic, illustrates the Center's capacity to lead the discourse on society's pressing issues.**

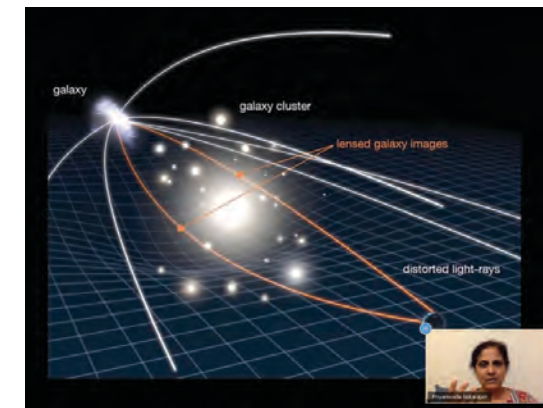
— Albert Ko

Department Chair and Professor of Epidemiology (Microbial Diseases),  
Yale School of Public Health, and Professor of Medicine (Infectious Diseases),  
Yale School of Medicine

### Yale Starlight Science Series

The Yale Starlight Science Series invites outstanding science faculty from Yale to present their latest research and engage with audiences on the most exciting breakthroughs in their respective fields. Notable lectures in the series over the past year include:

▼ **JUNE 2020** Priyamvada Natarajan, Professor of Astronomy and Physics, spoke about the cosmic discoveries that have radically altered our conception of the universe during her talk on “Mapping the Heavens.”



My (virtual) talk at the Center was incredibly engaging and invigorating for me. The questions from the audience were thoughtful and displayed deep understanding and excitement driven by sheer curiosity. It was utterly delightful; I so wish I had been able to be there and meet people in person.

— Priyamvada Natarajan

Professor of Astronomy and Physics,  
Yale University

◀ **SEPTEMBER 2019** Months before the global COVID-19 outbreak, Albert Ko, Department Chair and Professor of Epidemiology (Microbial Diseases) at the Yale School of Public Health and Professor of Medicine (Infectious Diseases) at the Yale School of Medicine, gave a prescient lecture on “Emerging Infectious Diseases: New Global Threats and Solutions.”

▼ **NOVEMBER 2019** Sten Vermund, Dean and Anna M.R. Lauder Professor of Public Health, Yale School of Public Health, and Professor of Pediatrics, Yale School of Medicine, led a discussion on “What Lessons Can China Draw from the U.S. Healthcare System?”



**YCB has been an invaluable resource for the Yale School of Public Health in its substantial partnerships in China.** We have done joint events with YAA (Yale Alumni Association), the Yale-China Healthcare Club, Access Health International, and multiple Chinese universities and companies. Our faculty have been welcomed by YCB to use the Center's logistic support and physical space. **We feel that the Yale brand is enhanced immeasurably by YCB.**

— Sten Vermund

Dean and Anna M.R. Lauder Professor of Public Health,  
Yale School of Public Health, and Professor of Pediatrics,  
Yale School of Medicine



In addition to the above program series, YCB has also served as a platform for meaningful exchanges among Chinese, U.S., and global leaders from various sectors:



▲ NOVEMBER & DECEMBER 2019 James Baron, William S. Beinecke Professor of Management at Yale SOM, Emma Seppälä '99, Co-Director of the Yale College Emotional Intelligence Project, Jane Sun, YCB Executive Council Member and CEO of Ctrip, and Tina Tao '10 MBA, COO and Partner of Sinovation Ventures, discussed “Women in Leadership” with nearly 20 Chinese female leaders at the Yale Women’s Leadership Program.



▲ NOVEMBER 2019 Neil Nan Peng Shen '92 MA, YCB Executive Council Chairman and Founding and Managing Partner at Sequoia Capital China, Edward Wittenstein '04, '12 JD, Deputy Director for Leadership Programs and Lecturer at Yale’s Jackson Institute for Global Affairs, and Carol Li Rafferty '00, Executive Director of YCB, hosted Eric Schmidt, former CEO and Executive Chairman of Google and Chairman of the U.S. Department of Defense’s Defense Innovation Advisory Board, for a roundtable discussion with prominent technology entrepreneurs in China on “The Future of Technology and Entrepreneurship in the U.S. and China.”



## Impactful Engagement During COVID-19

Throughout the COVID-19 pandemic, YCB has continued to convene thought leaders from Yale, China, the U.S., and beyond for meaningful dialogues on the most pressing issues. In addition to quickly pivoting to online programming, YCB has also increased engagement through social media platforms such as WeChat and Weibo (the Chinese equivalents of Facebook and Twitter) and partnering with Chinese media outlets to share the latest research and perspectives from Yale faculty.

In March 2020, YCB disseminated information about how to donate personal protective equipment (PPE) to Yale and New Haven and posted articles on Yale alumni efforts to provide PPE to Yale University, the city of New Haven, and the Yale New Haven Hospital system.



▲ **APRIL 2020** Sten Vermund, Dean and Anna M.R. Lauder Professor of Public Health, Yale School of Public Health, and Professor of Pediatrics, Yale School of Medicine, and Zhang Wenhong, Director of the Department of Infectious Diseases at the Huashan Hospital Affiliated with Fudan University, discussed “Lessons from China’s COVID-19 Response: Disease Management, Clinical Research, and Health Policy” in an event co-hosted by the Yale-China Healthcare Club, Yale Alumni Association (YAA), Yale School of Public Health, and YCB. Kevin Ye ’04 MBA, CEO of Salubris Pharmaceuticals and President of the Yale-China Healthcare Club, moderated this timely discussion with over 1,300 viewers in the audience.

In collaboration with Chinese media outlets such as the China Global Television Network (CGTN), *News China*, *Global Times*, and others, YCB facilitated numerous interviews with Yale faculty members who shared relevant, up-to-date, and data-driven analysis on the COVID-19 pandemic.

▼ **APRIL 2020** Xi Chen, Associate Professor of Global Health, Health Policy, and Economics at the Yale School of Public Health, in an interview on CGTN’s news program *Dialogue* about effective infection prevention and control.



Every time I visit Yale Center Beijing, it feels like going back to our New Haven campus. A salute to all the staff at the Center for their wonderful efforts to bridge gaps between the East and the West. Their facilitation of our communications with the Chinese media has **enhanced Yale’s academic influence to further benefit the well-being of the general public.**

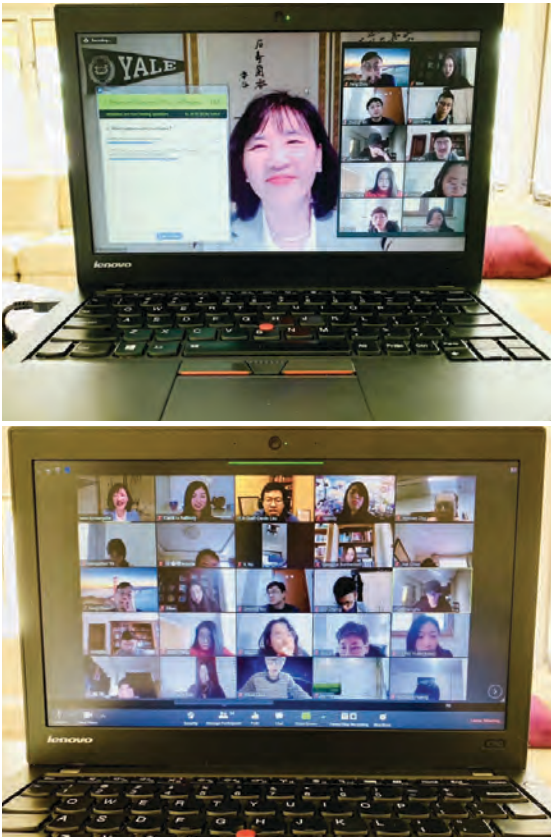
—Xi Chen  
Associate Professor of Global Health, Health Policy, and Economics, Yale School of Public Health





Since its founding, YCB has invited **Yale professors to lead multi-day programs in China**, which provide Chinese audiences with an opportunity to engage in discussions with Yale’s “best and brightest.” Although the COVID-19 pandemic has disrupted travel arrangements, YCB transitioned to multi-day online programming to enable participants from throughout China, as well as from outside of China, to continue to interact closely with Yale faculty.

▼ **APRIL 2020** Woo-Kyoung Ahn, Professor of Psychology, led YCB’s first online multi-day program on “Thinking” with over 40 participants.



Upcoming online multi-day programs include:

**August 2020 Priyamvada Natarajan**, Professor of Astronomy and Astrophysics, will explore black holes, dark matter, and other cosmic mysteries, and engage with program participants on the frontiers of astronomy and astrophysics.

**August 2020 David Bromwich** ’73, ’77 PhD, Sterling Professor of English, will lead participants on a close reading of and discussion on Shakespeare’s *Hamlet*, during which participants will ponder the perennial questions of revenge, tragedy, and justice.

It was a very interesting experience for me to realize how U.S.-centric many aspects of psychology studies are. The participants were highly engaged, with stimulating and creative questions coming from a variety of backgrounds. Since the lectures happened in the middle of a global pandemic, the planning and execution was not without challenges, but everybody involved was extremely helpful, dedicated, and skillful, and as a team, we came up with an online program with lots of engaging activities for the participants.

— **Woo-Kyoung Ahn**  
Professor of Psychology, Yale University

Special Thanks

We are grateful to **Edward Snyder**, former Dean of Yale SOM, and **David Bach** ’99, former Deputy Dean and Professor in the Practice of Management at Yale SOM, for their visionary leadership and the guidance they have provided to Yale Center Beijing through the years. We are delighted to welcome **Kerwin Charles**, Dean of Yale SOM, and look forward to continuing to support Yale University’s mission and global strategy.





Yale Center Beijing Advisory Committee



**Neil Nan Peng Shen '92 MA**  
Chair\*  
Steward, Sequoia Capital



**Bob Xu**  
Vice Chair\*  
Founder & Managing Partner  
ZhenFund



**Laura Cha\***  
Chairman  
Hong Kong Stock Exchange



**Chengyu Fu\***  
Former Chairman  
China Petroleum & Chemical  
Corporation



**Maurice R. Greenberg**  
Chairman & CEO  
Starr Companies



**Carla Hills '58 LLB\***  
Former U.S. Trade  
Representative



**Brad Huang '90 MBA\***  
Founder & Chairman  
Lotus Capital Management



**Pony Ma\***  
Core Founder,  
Chairman of the Board & CEO  
Tencent Group



**Clark T. Randt, Jr. '68\***  
Former U.S. Ambassador to  
China



**Jane Sun\***  
CEO  
Ctrip



**Jing Tsu**  
Chair  
Council on East  
Asian Studies  
Yale University



**Qiang (Victor) Wang\***  
Co-Founder  
ZhenFund



**Yuanqing Yang\***  
Chairman & CEO  
Lenovo



**Lei Zhang '02 MA, '02 MBA**  
Founder, Chairman & CEO  
Hillhouse Capital Management



**Xinsheng Zhang\***  
Former Vice Minister  
Ministry of Education  
People's Republic of China



**Qingzhi Zhou\***  
Chairman & President  
Narada Holding Group



**Wenzhong Zhou\***  
Former Ambassador  
People's Republic of China to  
the United States

Ex Officio Members



**Liang Meng '97 MPPM**  
Founding Managing Partner  
Ascendent Capital Partners



**Kevin Y. Zhang '94 MBA**  
Founder & Managing Director  
Hereditas Capital Management  
(Asia)



**Carol Li Rafferty '00**

\* Executive Council



My work with the Yale Center Beijing for a lecture on rhetoric and persuasion was entirely enjoyable: the audience was informed and attentive, the questions added something to people’s sense of the subject, and Devin Lau, who organized the event, was an ideally helpful moderator. I would gladly do something like it again.

— **David Bromwich '73, '77 PhD**

Sterling Professor of English,  
Yale University

For the Yale Center Beijing, I gave an online lecture on how the pandemic moved our lives onto the screen: it was a great opportunity to critically analyze a means of communication while using it. The technical team in Beijing was impeccable, Devin Lau a perfect host, and the audience amazing, with a Q&A lasting almost one hour. Now I look forward to experiencing the Center not only online...

— **Francesco Casetti**

Thomas E. Donnelly Professor of Humanities and Film and Media Studies,  
Yale University

This was a wonderful opportunity to share some of my ideas with a Chinese audience. The Q&A session was extremely impressive and I loved the honesty and enthusiasm of the audience in our give and take. All in all, a completely memorable experience.

— **Steven Smith**

Alfred Cowles Professor of Political Science and Professor of Philosophy,  
Yale University

**Yale Center Beijing**  
36th Floor, East Tower  
International Finance Center (IFC)  
No. 8 Jianguomenwai Avenue  
Chaoyang District  
Beijing, China 100022





WEBSITE: *<http://centerbeijing.yale.edu>*

WECHAT: *YaleCenterBJ*

WEIBO: *<http://weibo.com/yaleuniversity>*  
*<http://weibo.com/yalecenterbj>*

EMAIL: *[yalecenterbeijing@yale.edu](mailto:yalecenterbeijing@yale.edu)*