

Yale Center BEIJING | 耶鲁北京中心

ANNUAL REPORT

2024-2025

Yale Center BEIJING



Lynn Cooley
DEAN, YALE GRADUATE SCHOOL OF ARTS AND SCIENCES, AND
VICE PROVOST FOR POSTDOCTORAL AFFAIRS, YALE UNIVERSITY

“It was a joy to attend an alumni reception and to visit the Center for the first time.

The Center’s team is doing wonderful work that is especially important in today’s world – underscoring international collaboration that strengthens Yale’s research excellence. Thank you for the warm welcome!”



José García-León
HENRY AND LUCY MOSES DEAN OF MUSIC,
YALE SCHOOL OF MUSIC

“My first visit to Beijing as Dean was truly memorable. Hosting a concert with students and alumni at Yale Center Beijing, and engaging with such a vibrant alumni community, was an inspiring experience. I’m deeply grateful to the Center’s dedicated team for their warm welcome and thoughtful support.

My warmest congratulations to the entire team for the remarkable and inspiring work they are doing at the Center.”



Ambassador Kurt Tong
MANAGING PARTNER, THE ASIA GROUP
FORMER U.S. AMBASSADOR TO THE ASIA-PACIFIC
ECONOMIC COOPERATION (APEC), AND CHIEF OF
MISSION FOR HONG KONG AND MACAU

“It is such a good surprise to see Yale has a community hub at the heart of China’s capital city Beijing. I’m honored to give my talk at Yale Center Beijing, and I know I will be back as long as I’m invited. It’s lovely to see we have such an active discussion here about U.S.-China relations, the most important bilateral relations for the whole world and we can have open and meaningful discussions here with both local and international participants.

Yale Center Beijing is a luxury for all of us, and we should do our best to support.”

Yale Center BEIJING | 耶鲁北京中心

ANNUAL REPORT 2024–2025

Table of Contents

- 5 Executive Director's Letter
- 6 Yale Center Beijing in Numbers
- 9 Partnership Visits
- 19 Leadership and Enrichment Programs
- 27 Events and Speaker Series
- 107 About the Center
 - 108 Yale Center Beijing Advisory Committee
 - 110 Yale Center Beijing Team

EXECUTIVE DIRECTOR'S LETTER

Dear Friends of Yale Center Beijing,

From the SMART Talks on Climate Change Program to the Peking University-Yale Digital Health & Economics Summer Institute, 2024–2025 marked another dynamic year for Yale Center Beijing (YCB), an intellectual hub connecting ideas, people, and cultures.

Since its founding in 2014 as Yale University's only university-wide center outside the U.S., YCB has:

- Garnered nearly 1 million followers across social media platforms;
- Welcomed 153,000+ visitors and reached more than 4.4 million through online programming;
- Supported close to 500 Yale faculty and staff visits, issuing visa invitation letters, hosting events, and facilitating partnerships;
- Collaborated with all 14 Yale schools to strengthen engagement with leading universities and institutions in the region; and
- Served as a platform for cross-cultural and interdisciplinary dialogue among thought leaders in academia, business, and government.

These achievements would be impossible without the vision, generosity, and commitment of our donors – including founding donor Neil Shen, whose leadership was pivotal in establishing the Center. We are also grateful for the dedication of our Advisory Committee, Executive Council, and Yale University and Yale School of Management (SOM) leadership, whose stewardship has guided the Center's growth and ongoing success.

As we look ahead, we remain committed to advancing Yale University's mission and to deepening the University's engagement and impact worldwide.

With utmost gratitude,



Carol Rafferty '00
Executive Director, Yale Center Beijing

Yale Center BEIJING

in Numbers



153,000+

VISITORS WELCOMED

6,000+

PROGRAM PARTICIPANTS

SUPPORTED ~500

YALE FACULTY AND
STAFF VISITS

CONVENED
LEADERS FROM

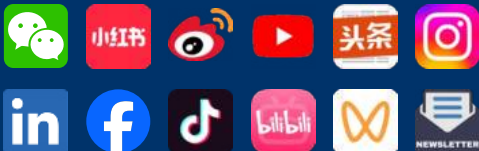
40

COUNTRIES

NEARLY

1 MILLION

FOLLOWERS WORLDWIDE



13 SOCIAL MEDIA ACCOUNTS

4.4 MILLION+

LIVE-STREAM VIEWS

66 MILLION+

TOTAL CONTENT VIEWS



PARTNERSHIP VISITS

Building on Yale University's centuries-long relationship with China, Yale University leaders and the Yale Center Beijing team have visited with Yale University's partner institutions in China and received visitors from throughout the region.

2024.09.25



Nancy Brown '81
Jane and David W. Wallace Dean & C.N.H.
Long Professor of Internal Medicine,
Yale School of Medicine

Yonghui Jiang
Professor & Chief of Medical Genetics,
Yale School of Medicine

Li Jin
President, Fudan University
President, Shanghai Medical College,
Fudan University

Anthony Koleske
Deputy Dean for Research;
Ensign Professor of Molecular Biophysics and
Biochemistry and of Neuroscience,
Yale School of Medicine

Devin Lau '09
Associate Director, Yale Center Beijing
Associate Director for China, Office of International
Affairs, Yale University

Lei Liu
Executive Deputy Director, Institute of Intelligent
Medicine, Fudan University

Li'an Lu
Director, Office of Global Partnerships,
Fudan University

Maurie McInnis PhD '96
President, Yale University

Carol Rafferty '00
Executive Director, Yale Center Beijing
Director for China, Office of International Affairs,
Yale University

Robert Rohrbaugh
Professor of Psychiatry;
Deputy Dean for Professionalism and Leadership;
Associate Dean for Global Health Education,
Yale School of Medicine



Brian Smith
Deputy Dean for Clinical and Translational Research;
Professor of Laboratory Medicine, of Biomedical
Engineering, of Medicine and of Pediatrics, Yale
School of Medicine

Steven Wilkinson
Vice Provost for Global Strategy,
Office of the Provost;
Nilekani Professor of India and South Asian Studies,
Yale University

Hua Xu
Assistant Dean for Biomedical Informatics;
Vice Chair for Research and Development, Depart-
ment of Biomedical Informatics and Data Science;
Robert T. McCluskey Professor of Biomedical
Informatics and Data Science, Yale School of Medicine

Fudan University Group's Visit to Yale

2024.12.07



Lei Chen
Professor of Pediatrics (Emergency Medicine) and of
Emergency Medicine,
Yale School of Medicine

Xiaomei Cong
Associate Dean of Research,
Beatrice Renfield Professor of Nursing,
Yale School of Nursing

John Frisbie
President, Yale-China Association

Joanne Iennaco
Director, Clinical Doctor of Nursing
Practice (DNP) Program
Professor of Nursing, Yale School of Nursing



Andrew Junker PhD '12
Regional Director, Mainland China and
Hong Kong Special Administrative Region,
Yale-China Association

Carol Rafferty '00
Executive Director, Yale Center Beijing
Director for China, Office of International Affairs,
Yale University

Robert Rohrbaugh
Professor of Psychiatry;
Deputy Dean for Professionalism and Leadership;
Associate Dean for Global Health Education,
Yale School of Medicine

Kate Rosenberg
Deputy Director, Education Programs,
Yale-China Association

Barry Wu
Professor of Medicine, Yale School of Medicine

Di Wu
Director, Health Programs, Yale-China Association

*Celebration of the 110th
Anniversary of the Founding of
Xiangya Medical School*

2025.01.10



Lauren Castagnola
Senior Director of Strategic Advancement
Communications, Yale Law School

Guobin Cui LLM '08
Vice Dean, School of Law, Tsinghua University
Director, Center for Intellectual Property, School of
Law, Tsinghua University

Haifeng Deng
Chairman, Faculty Committee, School of Law,
Tsinghua University

Heather Gerken
Dean and Sol & Lillian Goldman Professor of Law,
Yale Law School

Alexis Harrigan
Director of Development, Yale Law School

Haibo He
Professor, School of Law, Tsinghua University

Debra Kroszner
Associate Dean, Yale Law School

Han Liu LLM '09, SJD '12
Professor, School of Law, Tsinghua University

Jun Long
Vice Dean, School of Law, Tsinghua University

Kristen Rozansky
Associate Dean, Yale Law School

Casey Ryan
Director of Alumni Engagement, Yale Law School

Yanyou Yi
Professor, School of Law, Tsinghua University
Director, Research Center of Evidence, School of
Law, Tsinghua University

Taisu Zhang '05, JD '08
Professor of Law, Yale Law School

Guangquan Zhou
Dean, School of Law, Tsinghua University

*Yale Law School Group's Visit to
Tsinghua University*
Support Provided by Yale Center Beijing

2025.01.10



Xin Dai
Vice Dean, Peking University Law School

Fang Fang
Vice President, Peking University

Heather Gerken
Dean and Sol & Lillian Goldman Professor of Law,
Yale Law School

Li Guo
Dean, Peking University Law School

Debra Kroszner
Associate Dean, Yale Law School

Kristen Rozansky
Associate Dean, Yale Law School

Taisu Zhang '05, JD '08
Professor of Law, Yale Law School

Manli Zhou
Deputy Director, Office of International Relations,
Peking University

*Yale Law and China: Peking
University—Yale Law School Forum on
Legal Scholarship and Education*

*Yale Law School Group's Visit to
Peking University*
Support Provided by Yale Center Beijing

2025.05.06



Michael Cappello

Department Chair and Professor of Epidemiology (Microbial Diseases), Yale School of Public Health
Professor of Pediatrics (Infectious Disease) and Microbial Pathogenesis, Yale School of Medicine
Member, Academic Advisory Council, Schwarzman Scholars

George Chen

Yale World Fellow '14
Managing Director & Co-Chair of Digital Practice, The Asia Group

Carol Rafferty '00

Executive Director, Yale Center Beijing

Xingzui Wang

Yale World Fellow '13
Chair, Chongho Rural Development Promotion Center

Yuanhua Wen

Yale World Fellow '12
Chairman, NewUp Bank of Liaoning

*Maurice Greenberg World Fellows
Beijing Reunion*

2025.05.09



Resty Fufunan '24

Yale Light Fellow, Middlebury in Beijing
Intern, Yale Center Beijing

Drew Kunard

Resident Director, CET (Formerly China Educational Tours) Academic Programs Beijing

Rong Li

Associate Professor and Director, Middlebury in Beijing

Carol Rafferty '00

Executive Director, Yale Center Beijing

Sara Ramos '27

Yale Light Fellow, Middlebury in Beijing

Joyce Wang

Deputy Director, Yale Center Beijing

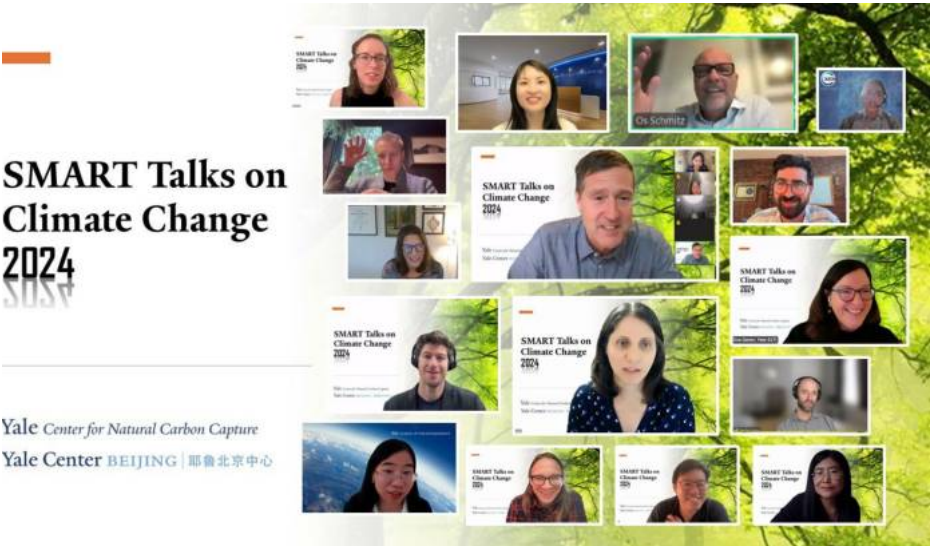
Liu Yang

Associate Director of Communications, Yale Center Beijing

*Yale Center Beijing Team's Visit to
Middlebury in Beijing*

LEADERSHIP AND ENRICHMENT PROGRAMS

Since its inception, Yale Center Beijing has led and supported a variety of leadership and enrichment programs for established and aspiring leaders in China and beyond. In recent years, the *SMART Talks on Climate Change Program* and the *Experience Yale Program Series* have become flagship programs of the Center.



From devastating natural disasters to a global pandemic, the effects of climate change continue to be more pressing, extreme, and far-reaching than ever before. Through offering young people an opportunity to converse with top scholars, practitioners, and key policy-makers in the field, SMART Talks on Climate Change aims to endow leaders of the next generation with useful insights to tackle critical issues facing our planet.

2024.10.01–10.07

Toby Bryce
Managing Director,
Yale Center for Natural Carbon Capture
Climate Change Solutions

Liza Comita
Professor of Tropical Forest Ecology,
Yale School of the Environment
Co-Director, Yale Center for Natural Carbon Capture

Carol Rafferty '00
Executive Director, Yale Center Beijing
Opening Ceremony

Eva Garen
Director, Yale's Environmental Leadership &
Training Initiative
Social Dimensions of Forest Restoration

Luke Gloege
Postdoctoral Associate, Yale University
*Harnessing the Ocean:
Marine Carbon Dioxide Removal*

Sara Kuebbing
Research Director,
Yale Applied Science Synthesis Program Lecturer,
Yale School of the Environment
*Managing Forests for Carbon
and Biodiversity*

Lucy Page
Postdoctoral Associate, Yale Economic Growth
Center and Macmillan Center
Fixing Forest Carbon Credits

Noah Planavsky
Associate Professor of Earth & Planetary Sciences,
Yale University
*Enhanced Rock Weathering:
A Geological Climate Solution*

Aaron Reiss '10
Freelance Researcher, Journalist, and Cartographer
Writing on Climate Change

Luke Sanford
Assistant Professor of Environmental Policy and
Governance, Yale School of the Environment
*Remote Sensing for Monitoring
Deforestation*

Oswald Schmitz
Oastler Professor of Population and Community
Ecology, Yale School of the Environment
*Animals in the Carbon Cycle:
Rewilding as a Climate Solution*

Satrio Wicaksono
Yale Climate Fellow '24
Nature-Based Solutions in Asia

Stephen Wood
Associate Research Scientist & Lecturer,
Yale School of the Environment
*Regenerative Agriculture and
Soil Carbon Storage*

Yuan Yao
Associate Professor of Industrial Ecology and
Sustainable Systems, Yale School of the Environment
*Biochar & Cross-Laminated Timber
as Climate Solutions*

Yan Zhu
Associate Research Scientist,
Yale School of the Environment

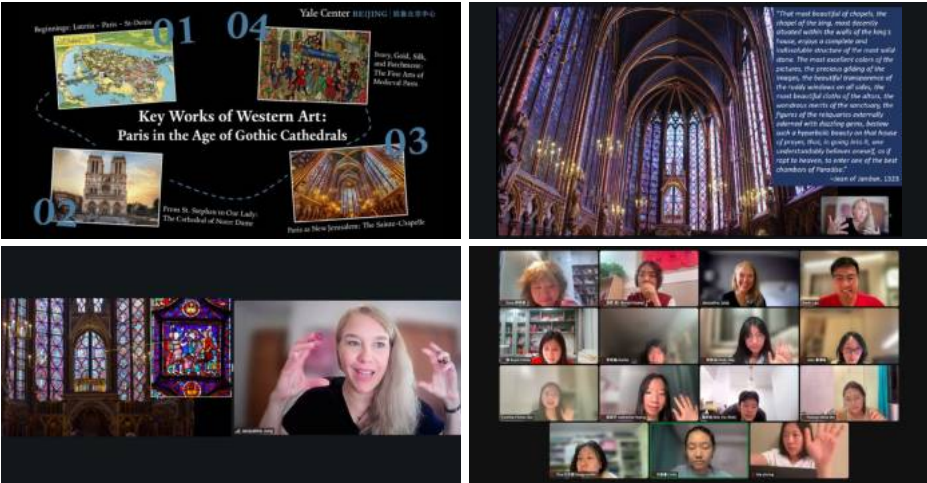
Devin Lau '09
Associate Director, Yale Center Beijing
Closing Ceremony

Experience Yale Program Series

Yale Center Beijing has held Yale faculty-led multi-day programs for next generation leaders and lifelong learners, enabling them to engage in intellectual exchanges with peers and Yale faculty, discover new passions, and be immersed in critical thinking, evidence-based discussions, and collaborative activities.

Experience Yale Program Series

2024.07.08–07.11



Jacqueline Jung
Professor of History of Art, Yale University

*Key Works of Western Art:
Paris in the Age of Gothic Cathedrals*
Experience Yale Program Series



Jacqueline Jung
PROFESSOR OF HISTORY OF ART, YALE UNIVERSITY

“Introducing participants in Beijing to the art and architecture of Gothic Paris from my home in the U.S. was an amazing experience, made all the more special by the fact that the city was home to the Summer Olympics.

Yale Center Beijing is doing important work by bringing together new perspectives in a truly global way. It was a wonderful opportunity for myself and the participants alike to expand our horizons while shortening the vast distances between our countries. I look forward to engaging with the receptive young people in the program again.”

2024.08.17–08.25



Peter Conroy PhD '23
Postdoctoral Fellow, Tsinghua Institute for
Advanced Study in Humanities and Social Sciences

*The Modern Essay: Explaining,
Persuading, and Telling a Story*
Experience Yale Program Series



Peter Conroy PhD '23
POSTDOCTORAL FELLOW, TSINGHUA INSTITUTE FOR ADVANCED STUDY
IN HUMANITIES AND SOCIAL SCIENCES

“With the help of its diligent and attentive staff, I hosted a summer writing program at Yale Center Beijing with a group of highly engaged Chinese participants, and I was consistently impressed and enlivened by the level of discussion.

My program at the Center was modeled on a writing seminar that I had previously led several times at Yale, but my discussions of the same material with the group in Beijing were fresh and surprising, whether we were discussing cosmopolitanism, artificial intelligence, or the literary affordances of different types of English.

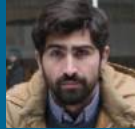
I came away from the experience feeling that the Center is an essential resource both for Chinese young leaders eager to discuss new ideas and for international scholars hoping to connect with Chinese audiences.”

2025.02.06–02.09



Aaron Reiss '10
Freelance Researcher, Journalist, and Cartographer

Writing About Place
Experience Yale Program Series



Aaron Reiss '10
FREELANCE RESEARCHER, JOURNALIST, AND CARTOGRAPHER

“I’ve had the privilege of discussing a range of topics at Yale Center Beijing — op-ed writing, writing about place, and writing about climate change.

That time always leaves me deeply touched by the power of communicating across cultures and across borders. There is something truly magical about being able to connect, laugh with, inspire, and help a roomful of participants halfway around the world.”

2025.05.22 – 05.30



Christina Kinane
Assistant Professor of Political Science,
Yale University

*Understanding American
Political Institutions:
Power, Process, and the Public Good*
Experience Yale Program Series



“Leading a four-day virtual program on American political institutions for Yale Center Beijing was profoundly energizing. Even across 7,000 miles, the participants’ incisive questions and lively discussion recreated the feel of an in-person seminar and reminded me how powerfully ideas can travel.

The Center’s work – opening a forum where Yale scholarship meets practitioners, young people, and citizens in China – has never been more vital.”

EVENTS AND SPEAKER SERIES

Since Yale Center Beijing opened in 2014, it has become a prominent convening space and vibrant activity hub for events and programs that feature Yale faculty and alumni speakers, as well as thought leaders from various fields.

Over the years, we are proud to have engaged millions of viewers and thousands of participants through our diverse portfolio of speaker series, including:

GREENBERG DISTINGUISHED COLLOQUIUM

Thanks to the generosity of Mr. Maurice Greenberg, Chairman and CEO of Starr Insurance Companies, and a member of Yale Center Beijing’s Advisory Committee, Yale Center Beijing is pleased to host the Greenberg Distinguished Colloquium, which convenes thought leaders from all sectors who, in the spirit of Mr. Greenberg, play pivotal roles in building bridges among China, the U.S., and the rest of the world.

PRINCETON UNIVERSITY PRESS- YALE CENTER BEIJING IDEAS SERIES

In collaboration with the Princeton University Press (PUP) China Office, Yale Center Beijing has launched a speaker series that seeks to connect the most inspiring minds in academia with readers in the region.

“FOR HUMANITY” LECTURE SERIES

“For Humanity” Lecture Series aims to engage with the global Yale community and local society on cutting-edge ideas and issues that impact our world.

YALE UNIVERSITY PRESS-YALE CENTER BEIJING “FIND YOUR NEXT READ” SERIES

In collaboration with Yale University Press (YUP), Yale Center Beijing has launched a speaker series that brings YUP’s new publications to a wider audience and creates opportunities for readers to interact with the authors.

2024.07.16



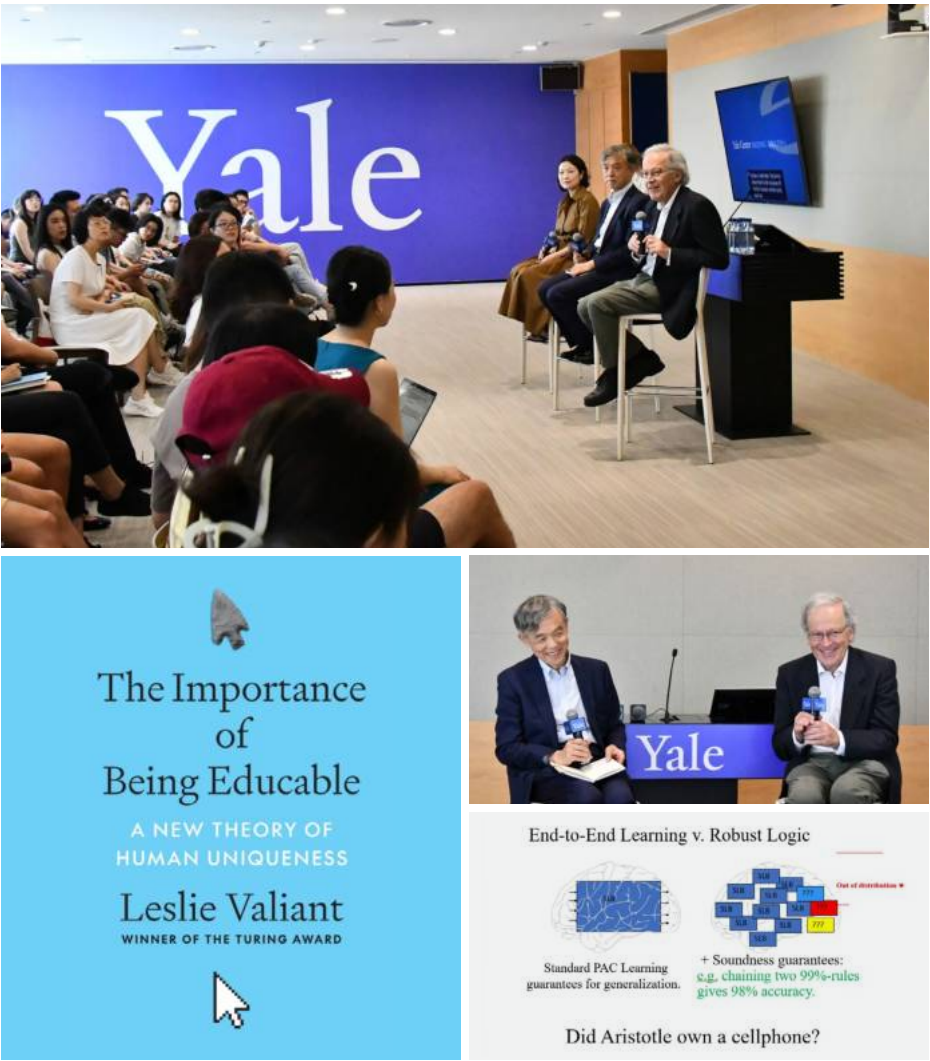
Jinyi Chu
Assistant Professor of Slavic Languages and
Literatures, Yale University

Koji Hirata
Senior Research Fellow & Senior Lecturer in History,
Monash University

Hongzhe Wang
Associate Professor of Journalism and
Communication, Peking University

*The Aesthetics of Reform &
Transnational Industrial Development
Through the Lens of Angang*

2024.07.20



Leslie Valiant
T. Jefferson Coolidge Professor of Computer
Science and Applied Mathematics, Harvard University

Lan Xue
Dean, Schwarzman College, Tsinghua University

The Importance of Being Educable
**Princeton University Press-Yale Center Beijing
Ideas Series**
In Collaboration with Princeton
University Press China Office

2024.07.24



Julia Bakes

Administrative Assistant, The Richard U. Light Fellowship Office, Yale University

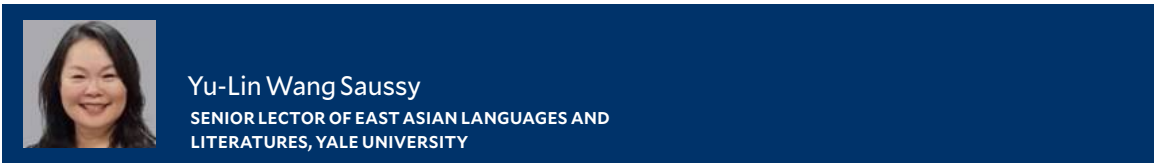
Kripa Bhagat

Senior Associate Director, The Richard U. Light Fellowship Office, Yale University

Yu-Lin Wang Saussy

Senior Lector of East Asian Languages and Literatures, Yale University

Richard U. Light Fellowship Reception 2024



“In mid-July, I visited Beijing with colleagues from the Light Fellowship program and hosted a gathering for current Light Fellows at Yale Center Beijing. That day at the Center, I watched as participants set aside with the pressure of studying abroad, relax, and spoke freely – some even singing with joy.

They told me it was the most carefree moment they had experienced in Beijing over the past few weeks. ‘Being in a place of our own’, they said, made them feel relaxed, free, and cared for. Devin Lau, who coordinated the event at Yale Center Beijing, felt like an older brother to them. His kindness, understanding, and support gave them a sense of coming home. The participants also expressed how proud they felt of the Center’s facilities and resources. Thank you to Yale Center Beijing for providing these young participants, journeying far from home, with a place they can truly call their own – a home for Yalies abroad.”

2024.07.27



Enyan Dai

Assistant Professor, Hong Kong University of Science and Technology (Guangzhou)

Dejing Dou PhD '04

Distinguished Professor, Fudan University;
Chief Scientist, Beijing Electronic Digital & Intelligence

Haoji Hu

Associate Professor, College of Information Science and Electronic Engineering, Zhejiang University

Xu Jia

Associate Professor of Artificial Intelligence, Dalian University of Technology

Huasheng Song

Professor of Economics, Zhejiang University

Jianguo Wang

Professor, Guanghua School of Management, Peking University

Changqi Wu

Dean, School of Management, Shandong University
Professor, Guanghua School of Management, Peking University
Honorary President, KU Leuven Alumni Chapter Beijing

Qiong Yang

Co-Founder and Chief Scientist, Qianhe Technology

Jinzhou Ye

Vice Dean, School of Philosophy, Huazhong University of Science and Technology

Hang Yin PhD '04

Professor & Former Vice Dean, School of Pharmaceutical Sciences, Tsinghua University

*Yale Club of Beijing AI Series:
AI for Society*

In Collaboration with Yale Club of Beijing and KU Leuven Alumni Chapter Beijing

2024.07.31



Joy Hermalyn
Voice Teacher, Shen Curriculum for
Musical Theater, Yale University

*From Broadway to Opera:
Finding Your Unique Voice*

2024.08.05–08.09



Ian McFarland
Robert W. Woodruff Professor of Theology, Candler
School of Theology, Emory University

Summer Workshop on Philosophy

Chloë Starr
Professor of Asian Christianity and Theology,
Yale Divinity School

2024.08.10



Demi Dai MBA '25
Amy Huang MBA '28 (Silver Scholar)
Strategy Analyst, Accenture
Kristen Mercuri
Director of Admissions, Recruiting & Outreach,
Yale School of Management
Amelia Sha MBA '25



Faye Wang MBA '24
Consultant, Boston Consulting Group
Yale SOM MBA Panel & Reception
In Collaboration with Yale School of Management

2024.08.10



Kristen Mercuri
Director of Admissions, Recruiting & Outreach,
Yale School of Management

*Yale SOM Master's in Asset Management
Information Session*
In Collaboration with Yale School of Management

2024.08.24



Martin Ma PhD '07
Founder & CEO, Happy Universe

Shaokun Wang MMS '22
Vice President, HuaGai Capital

Fred Yang PhD '28
Founder & CEO, UniX AI

Max Zhou MS '14
Founder & CEO, Presence

*Yale Club of Beijing AI Series:
Intelligent Robotics*
In Collaboration with Yale Club of Beijing

2024.08.30



Iris Long
Writer & Curator

Vincent Yeh MFA '24

Yan Zhou
Artist

*Yale MFA Painting & Printmaking Class
of 2024 Exhibition: Alternatives to Shine*
In Collaboration with SPURS Gallery and Yale Club
of Beijing

2024.08.31



Darren Cai MBA '98

Founder and Managing Partner,
Sherpa Healthcare Partners

Bingshu Chen

Vice President, Neusoft Medical

Lian Dai

Deputy General Manager, Beijing Zhongguancun
Science City Innovation Development

Jiacong Guo

Executive Director of Investments, BioTrack Capital
Co-Founder, Beicell Therapeutics

Tianran Guo

General Manager, Uscom China
Director of International Operations, Uscom

Zhiyuan Hu

Chairman, Beijing Nanopep Biotechnology

Xiao Huang PhD '12

Managing Director, Yunfeng Capital

Guangju Ji

Researcher & Director of Biomedical
Technology Center, Institute of Biophysics,
Chinese Academy of Sciences

Xinchun Jin

Director & Professor, Department of Human
Anatomy and Histoembryology,
Capital Medical University

Fengmin Lu

Head & Professor, Department of Pathogen Biology,
School of Basic Medical Sciences, Peking University
Director, Infectious Disease Center, Peking University
Vice President, Penn Medicine China Club

Shaokang Wang

Co-Founder & COO, InferVision

Han Xia

Founder & CEO, HugoBiotech

Donglou Xiao

Vice President, China Association of Health
Promotion and Education
Former Deputy Director, Administration of Disease
Prevention and Control, China's National Health and
Family Planning Commission

Yiwen Zhang

President, University College London (UCL)
Club of Beijing

Selina Zhang MBA '04

Managing Director, Yale Healthcare Club of China

*International Forum on Innovations
and Trends in Biomedicine 2024*

In Collaboration with University College London
(UCL) Club of Beijing, Yale Healthcare Club of
China, and Penn Medicine China Club

2024.09.03



Perry Wong

General Manager, Research Department,
Milken Institute China Center

*Milken Institute's Annual Best-Performing
Cities Report Press Conference 2024*
Hosted by Milken Institute

2024.09.20



Alexander Bent

Co-Founder and Managing Partner,
Undivided Ventures

Vincent van Bijsterveld

Director, Global Real Estate Engagement Network

Zhi Cao

Professor, College of Environmental Science and
Engineering, Nankai University

Adriel Chan

Chair, Hang Lung Properties

Sam Crispin

Head, Sustainability and ESG, Savills Asia Pacific

Callum Douglas

Nature and Climate Advisor

Peipei Gao

Lead, Management Consulting China, AFRY

Zhijun Gui

Senior Vice President,
Shanghai E-Carbon Digital Technology

Gregory Hadley-King

Workspace Project Delivery Lead, Asia Corporate
Services, Hongkong and Shanghai Banking
Corporation (HSBC)

John Haffner

Yale World Fellow '08

Deputy Director-Sustainability, Hang Lung Properties



Eli Konvitz

Vice-Chair, Urban Land Institute (ULI) Hong Kong

Wei Li

Principal, Building, Infrastructure, and Supply
Chain, Rocky Mountain Institute (RMI) China

Yinghao Liu

Technical Director, Low Carbon Metallurgy
Innovation Center, China Baowu Steel Group
Corporation Limited

Tao Lu

Vice Dean, Research Institute,
Shanghai E-Carbon Digital Technology

Nicolas Martin

Sustainable Store Planning Manager,
Louis Vuitton Moët Hennessy (LVMH);
Lead, Building Materials Project, LVMH Gaïa

Qijian Mu

Director, Division of Climate Response, Department
of Resources and Environment, China International
Engineering Consulting Corporation (CIECC)

Anastasia O'Rourke

Lecturer, Yale School of the Environment
Senior Managing Director, Carbon Containment Lab

Jean Qin

Deputy Director, Technical Services and Sustainable
Development, Chinese Mainland, Swire Properties

Raefer Wallis

Founder & CEO, GIGA/RESET Standard

Jia Wei

Senior Manager, Energy & Industry Systems,
Climate Group Beijing (UK) Representative Office

Anthony Wu

CEO, Asia Clean Capital

Bixuan Wu

Founder, Climate Perspective
Senior Partner, Hiways (Beijing) Law Firm

Ming Xu

Professor & Associate Dean,
School of Environment, Tsinghua University

Frank Zhong

Deputy Director General & Chief Representative,
World Steel Association Beijing Office

Real Estate & Decarbonization Summit

Hosted by Hang Lung Properties

2024.09.22



Jing Hu
Senior Engineer

Zhiyao Lu PhD '14
Director of Climate Change and Business
Sustainability, SEE Foundation

Charlene Ren
Founder & Board Member, My H₂O Water
Information Network

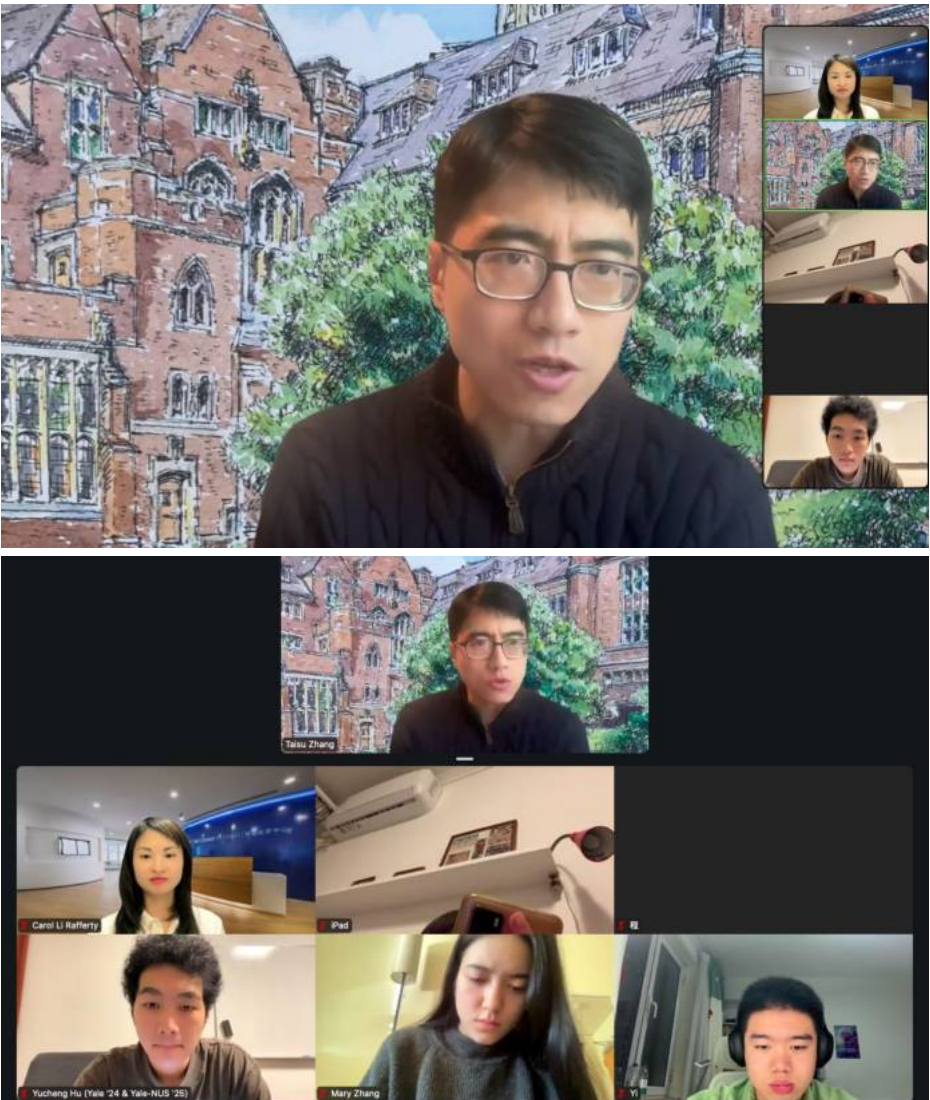
Binbin Wang
Yale World Fellow '23
Founder, Climate Future Global Innovation Lab
(C Force Lab), Institute of Carbon Neutrality,
Peking University

Yanhui Wang
Deputy Executive Director for Operation and
Organizational Development,
The Institute for Global Decarbonization Progress

Ming Yin
Senior Vice President, Vitalstar Biotechnology

*Polar Perspectives: Navigating the
Future with Women in STEMM*
In Collaboration with the Homeward Bound
Project and Yale Club of Beijing

2024.10.17



Taisu Zhang '05, JD '08
Professor of Law, Yale Law School

*What Does Harris vs. Trump Mean to
Us? A Discussion on the 2024 U.S.
Presidential Elections*
Greenberg Distinguished Colloquium

2024.10.24



W. Chad Futrell
Assistant Dean, Schwarzman College,
Tsinghua University

Yingyi Ma
Professor of Sociology, Syracuse University

Yuan Yuan
Head of Counseling Office, Ren Chao Fen (RCF)
Experimental School

Why Study Abroad?
In Collaboration with Joint Publishing

2024.10.26



Charles Wang PhD '00
Chairman, Shenzhen Dragon Pacific
Capital Management

*Strategies for Success
in Wealth Management*
In Collaboration with Yale Club of Beijing

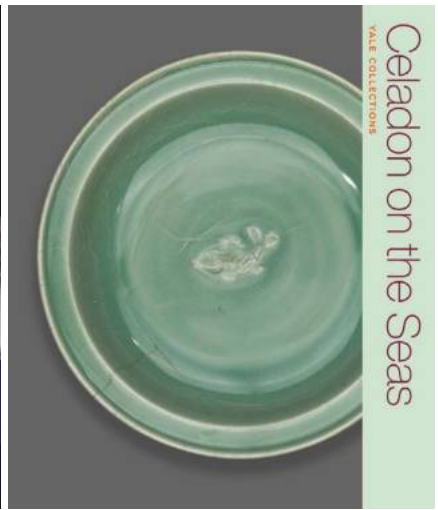
2024.10.28



Yansong Ma MArch '02
Eero Saarinen Visiting Professor of Architectural
Design, Yale School of Architecture
Founder & Principal Partner, MAD Architects
Xiaoyi Pu MArch '17
China Representative, Pei Architects

Twenty Cities
Greenberg Distinguished Colloquium
In Collaboration with Yale Club of Beijing

2024.11.01



Denise Leidy
Ruth and Bruce Dayton Curator of Asian Art,
Yale University Art Gallery

How to Read Ceramics, Then and Now:
Celadon on the Seas
Yale University Press-Yale Center Beijing
"Find Your Next Great Read" Series

2024.11.08



Sayash Kapoor
PhD Candidate, Center for Information Technology Policy, Princeton University

Thomas Luo
Founding Partner, GenAI Assembling
Founder & CEO, PingWest and Si-Planet

Arvind Narayanan
Professor of Computer Science; Director, Center for Information Technology Policy, Princeton University

AI Snake Oil: What Artificial Intelligence Can Do, What It Can't, and How to Tell the Difference
Princeton University Press-Yale Center Beijing Ideas Series
In Collaboration with Princeton University Press China Office

2024.11.10



Shulei Bi
Chinese President, Nova Academy

Linda Lin
Executive Director & Senior College Counselor, Hurtwood House (HD & HT) Schools

Wei Liu
Principal, Beijing New Talent School

Richard Pratt
Principal, Joy Passion Empathy Dedication (JPED) Academy

Shi Wang
Vice Principal, Beijing No. 4 High School International Campus

Daniel Williams
Executive Head of Schools, Daystar School

Rae Yang '07
Assistant Head of School for School Affairs, Keystone Academy

Panel on New Trends in Education
Hosted by Babazhenbang

2024.11.17



Jonathan Feinstein
John G. Searle Professor of Economics and Management, Yale School of Management

Creativity in Large-Scale Contexts
In Collaboration with Yale Club of Beijing

2024.11.22



Mary Evelyn Tucker
Co-Director, Yale Forum on Religion and Ecology
Binbin Wang
Yale World Fellow '23
Founder, Climate Future Global Innovation Lab (C Force Lab), Institute of Carbon Neutrality, Peking University
Xinzhong Yao
Former Dean, School of Philosophy, Renmin University of China

Annie Liang-Zhou
Co-Founder and Managing Partner, Liang Capital Partners
*Why Are Chinese Traditions Valuable?
Reviving Ancient Classics and
Restoring Historical Buildings*
In Collaboration with Yale Club of Beijing

2024.11.23



Chenxing Gao
Piano Instructor, Chamber Music Academy,
Zhejiang Conservatory of Music
Wenbin Jin MM'13, AD '15
Pianist
Bo Li MM '09
Violist
Xi Liao MM '15
Violinist

Shuai Shi
Violinist
Xiang Wan
Cellist
Instructor, Orchestral
Department, Xi'an
Conservatory of Music
Ivy League Charity Concert 2024
In Collaboration with Yale Club of Shanghai

2024.11.25



George Chen
Yale World Fellow '14
Managing Director & Co-Chair of Digital Practice,
The Asia Group

*A More Divided Digital World:
Different Approaches to AI Governance
in the Asia Pacific*
Greenberg Distinguished Colloquium
In Collaboration with Yale Club of Beijing

2024.11.26



Siddharth Chatterjee
Resident Coordinator in China, United Nations

Stone Shi
Partner, Ascendent Capital Partners

Judy Zhang MBA '12
President, Yale School of Management
Alumni Association Beijing Chapter
Managing Director, Cambridge Associates' Beijing Office

Yusheng Zhang
Founder & CEO, Apricot Forest

*How to Build Your
Personal Health Infrastructure*

In Collaboration with Yale School of Management
Alumni Association Beijing Chapter and Young
Presidents' Organization Greater China Chapter

2024.11.28

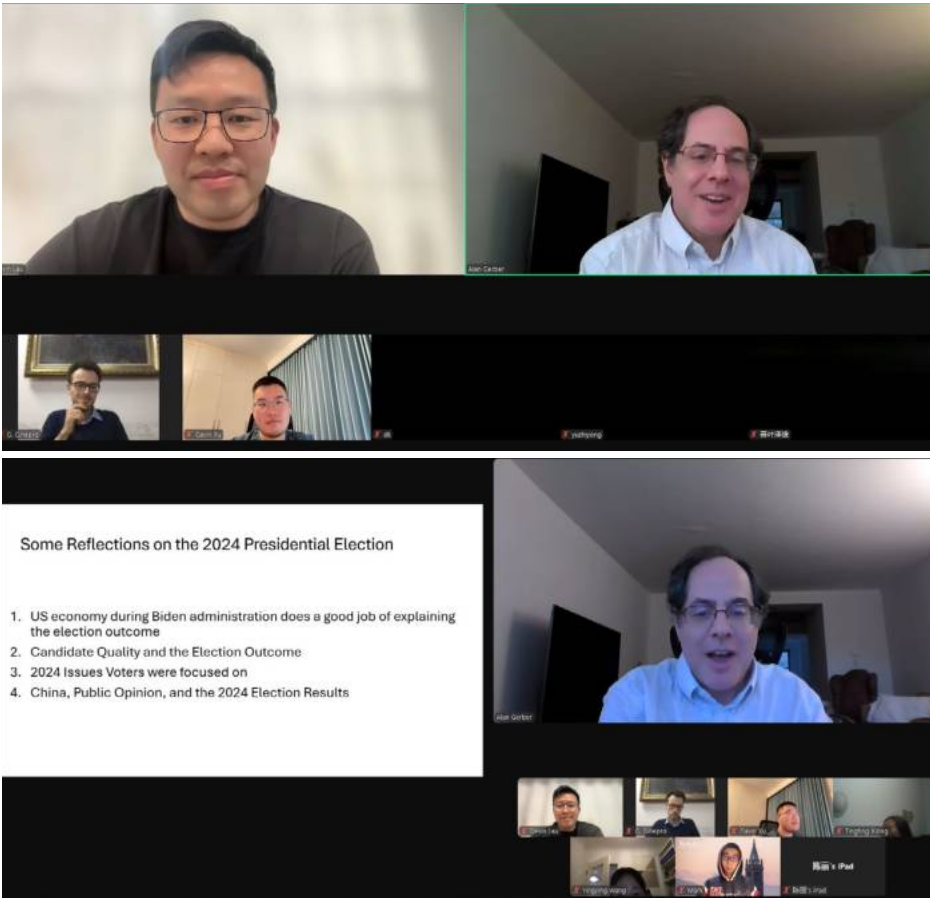


Li Zhou
Professor of Psychology,
Renmin University of China

*Guardians of the Mind: How Parents
Influence Children's Mental Health*

In Collaboration with Yale Club of Beijing

2024.12.02



Alan Gerber '86
Sterling Professor of Political Science,
Yale University

Perspectives on the U.S. Elections
Greenberg Distinguished Colloquium
In Collaboration with Yale Club of Beijing

2024.12.06



Deborah Davis
Professor Emerita of Sociology, Yale University

Melinda Liu
Beijing Bureau Chief, Newsweek

Do I? The Future of Marriage in China
Greenberg Distinguished Colloquium
In Collaboration with Royal Asiatic Society, Beijing
(RASBJ) and Yale Club of Beijing

2024.12.12



Nadia Benani

Counsellor, International Cooperation Division,
Embassy of Switzerland in China

Jürg Burri

Ambassador of Switzerland to China

Friederike Dörfler

Agricultural Counsellor, Embassy of Germany in China

David Fang

Senior Vice President, Corporate Affairs & Sustainability,
Head, International Water Business,
Zone Greater China, Nestlé

Shuwen Hu

Professor, College of Resources and Environmental
Sciences, China Agricultural University

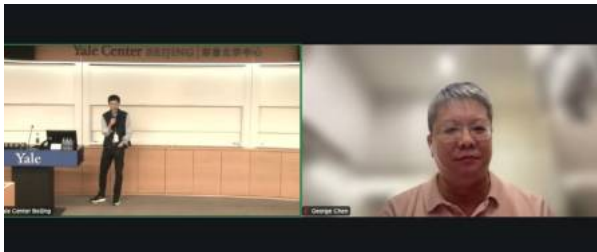
Stephan Rothlin

CEO, Rothlin International Management
Consulting

*ESG Workshop Series:
Food Waste & Food Scarcity*

Hosted by Konrad-Adenauer-Stiftung and Rothlin
International Management Consulting

2024.12.12



TECHNOLOGY
and the RISE of
GREAT POWERS

HOW DIFFUSION SHAPES
ECONOMIC COMPETITION

JEFFREY DING

George Chen

Yale World Fellow '14
Managing Director & Co-Chair of Digital Practice,
The Asia Group

Jeffrey Ding

Assistant Professor of Political Science, George
Washington University

*Technology and the Rise of Great
Powers: How Diffusion Shapes
Economic Competition*

**Princeton University Press-Yale Center
Beijing Ideas Series**

In Collaboration with Princeton University Press
China Office

2024.12.14



Victoria Lu
Art Curator
Professor in the Creative Industry PhD Program,
Shih Chien University
Creative Director, ASIA FILM PLUS

Stella Xu MA '02
Chair, YaleWomen China

*Coexisting with AI:
Navigating Career, Life, Art, and
Emotions in the Digital Age*
In Collaboration with Yale Club of Beijing

2024.12.14



Karim Alwadi
Advisory Board Member, China-Arab State Expo
Senior Fellow, Institute of Global Governance and
Development, Renmin University of China

Sean Wang
Executive President of International Operations,
TCL Zhonghuan Renewable Energy Technology

Zhaoyi Zhu
Former Visiting Scholar, Paul Tsai China Center,
Yale Law School
Research Associate Professor, Institute of
International Economic Studies;
Founder, Israel Center, University of International
Business and Economics

What's Next for the Middle East?
In Collaboration with Yale Club of Beijing

2025.01.07



Chenghao Sun
Visiting Scholar,
Paul Tsai China Center, Yale Law School
Fellow, Center for International Security and
Strategy (CISS), Tsinghua University

*Trump 2.0:
The Future of Sino-U.S. Relations*
In Collaboration with Yale Club of Beijing

2025.01.08



Qingyou Guan
Economist
President, Rushi Advanced Institute of Finance

Gang He
Co-Publisher & Editor, Harvard Business Review
China (Chinese Edition)

Yipin Li
Executive Vice President & Integrated
Marketing Director, Harvard Business Review China
(Chinese Edition)

Xiao Liu
Co-Publisher & General Manager, Harvard Business
Review China (Chinese Edition)

Xue Liu
Professor, Department of Organization and Strategic
Management, Guanghua School of Management,
Peking University

Fang Ruan
Managing Director & Senior Partner,
Boston Consulting Group

Joyce Wang
Deputy Director, Yale Center Beijing

*Harvard Business Review Chinese Edition:
Salon on the Future of Management*
In Collaboration with Yale Club of Beijing

2025.01.09



Hao Gao
Associate Dean, Institute of Philanthropy,
Tsinghua University
Director, Research Center for Global Family
Business, People's Bank of China (PBC) School of
Finance, Tsinghua University

Chenghong Jiang
Senior Partner & Director of the Cable Industry,
Far East Holding Group
Chairman & General Manager, Far East Electric
Founder & CEO, Beijing Xinyu Technology

Sally Shan MBA '97
Co-Founder & Chairman, AspenBridge Advisory

Helen Sun MAM '13
President, Yale Club of Beijing
Co-Founder & CEO, AspenBridge Advisory

*Family Office:
Global Frontier and China Practice*
In Collaboration with Yale Club of Beijing

2025.01.10



Cinthya Garibay MBA '24
Kai Liao MBA '24
Amelia Sha MBA '25
Xuejing Wang MBA '25 (2024 Fall
Exchange Student)

Yale SOM Winter Social 2025
In Collaboration with Yale School of Management

2025.01.10



Heather Gerken
Dean and Sol & Lillian Goldman Professor of Law,
Yale Law School
Taisu Zhang '05, JD '08
Professor of Law, Yale Law School

*Fireside Chat with
Yale Law School Alumni*
Hosted by Yale Law School and Yale Club of Beijing
Support Provided by Yale Center Beijing

2025.01.11



Jingru Chen
Staff Psychologist, Mental Health and Counselling,
Yale Health

*Thriving Abroad: Mental Health
Strategies for International Students*
In Collaboration with Yale Club of Beijing

2025.01.13



Peilin Jia '96
Co-Founder, IOH
Richard Lawrence, Jr.
Founder & Executive Chairman,
Overlook Investments

*Forty Years of Investing in Asia with
Richard H. Lawrence, Jr.*
In Collaboration with Yale Club of Beijing and
Harvard Business School Club of Beijing

2025.01.19



Jinyi Chu
Assistant Professor of Slavic Languages and
Literatures, Yale University
Cheng Xing
Doctoral Supervisor, School of Literature,
Zhejiang University

*Fin-de-siècle Russia and Chinese
Aesthetics: The Other is the Universal*
In Collaboration with Global Studies Forum and
Oxford University Press

2025.01.21



Xi Chen
Associate Professor of Public Health (Health Policy),
Yale School of Public Health

Megan Ranney
Dean, Yale School of Public Health
C.-E. A. Winslow Professor of Public Health (Health
Policy), Professor of Emergency Medicine,
Yale University

Emma Zhao
Senior Associate Director, International
Development, Office of Development,
Yale University

*Yale School of Public Health
Dean's Reception*
In Collaboration with Yale School of Public
Health and Yale Office of Development

2025.01.23



Melvin Chen
Professor in the Practice of Piano;
Director, Norfolk Chamber Music Festival,
Yale School of Music

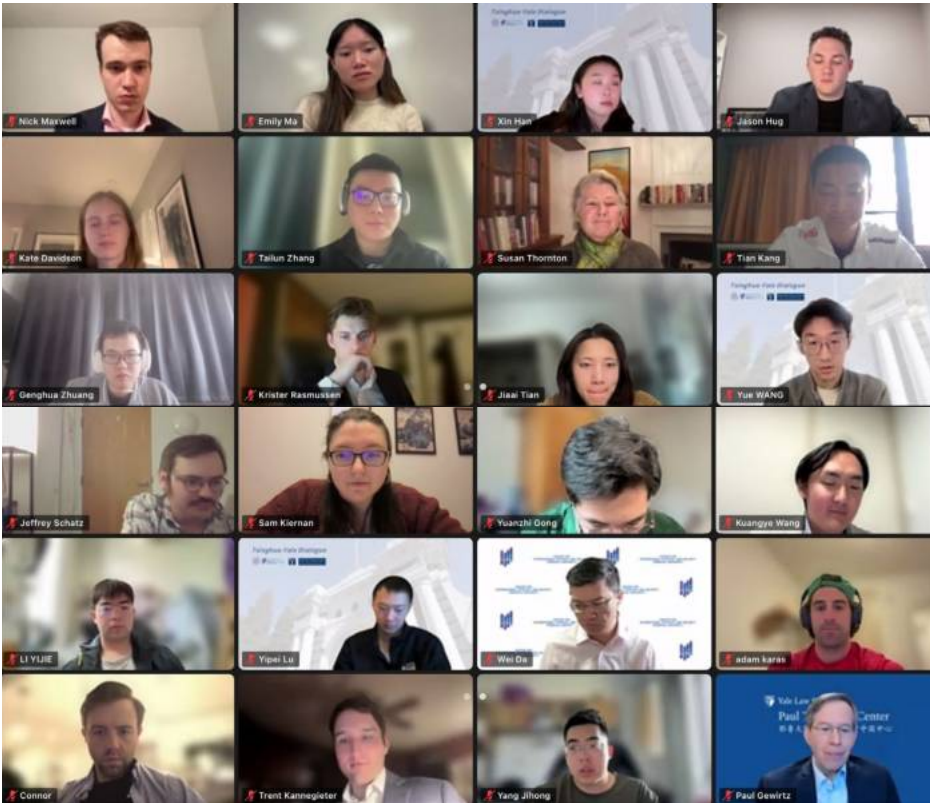
Sihao He
Member, Shanghai Quartet
Faculty Member, Tianjin Juilliard School

Angelo Xiang Yu
Member, Shanghai Quartet
Chair of Chamber Music, Tianjin Juilliard School

Chuhan Zhang BA/MM '18
Lecturer, China Academy of Art

Yale Norfolk Chamber Music Festival Concert
In Collaboration with Yale Norfolk Chamber Music Festival

2025.03.01/03.29/04.19



Wei Da
Director, Center for International Security and Strategy (CISS)
Professor, School of Social Sciences, Tsinghua University

Paul Gewirtz
Potter Stewart Professor of Constitutional Law, Yale Law School
Director, Paul Tsai China Center, Yale Law School

Susan Thornton
Senior Fellow, Paul Tsai China Center, Yale Law School
Former Acting Assistant Secretary of State for East Asian and Pacific Affairs, U.S. Department of State

Tsinghua-Yale Youth Dialogue 2025
In Collaboration with the Paul Tsai China Center at Yale Law School, the Center for International Security and Strategy (CISS) at Tsinghua University, and the Center for Global Competence Development at Tsinghua University

2025.03.12-03.19



Stephen Dyer
Partner, Managing Director & Asia Leader, Automotive & Industrial Practice, Alix Partners

Janice Hu
President, Union Bank of Switzerland (UBS) China
Member, Yale School of Management Board of Advisors

Zeqiong Huang
Associate Professor of Accounting, Yale School of Management

Chris Miao
Partner & Human Capital Head, HSG

Holger Santel
First Vice President & Executive Vice President, Commercial Affairs, SAIC Volkswagen Automotive Company

Sally Shan MBA '97
Co-Founder & Chairman, AspenBridge Advisory

Feng Shen
Executive Vice President, NIO
Chairman, Quality Management Committee, NIO

Faye Wang MBA '24
Consultant, Boston Consulting Group

Murong Yang '12
Managing Director & Investment Committee Member, Future Capital

Hanqing Yu
Managing Director, HSG

Sean Zhang
Head, Investor Relations, JD.com

SOM International Experience 2025
Support Provided by Yale Center Beijing

2025.03.15



Dejing Dou PhD '04
Distinguished Professor, Fudan University
Chief Scientist, Beijing Electronic
Digital & Intelligence

*Industrial Applications of Large
Language Models and AI Innovation*
In Collaboration with Yale Club of Beijing

2025.03.21



Stephen Roach
Senior Fellow, Paul Tsai China Center,
Yale Law School

*The Impact of Trump 2.0 on
U.S.-China Relations*
Greenberg Distinguished Colloquium
In Collaboration with Yale Club of Beijing

2025.03.22



Clark Wu '27
Business Manager, The Yale Spizzwinks(?)

*Melody Across the Ocean: The Yale
Spizzwinks(?) A Capella Concert*
In Collaboration with Yale Spizzwinks(?) and Yale
Club of Beijing

2025.03.24

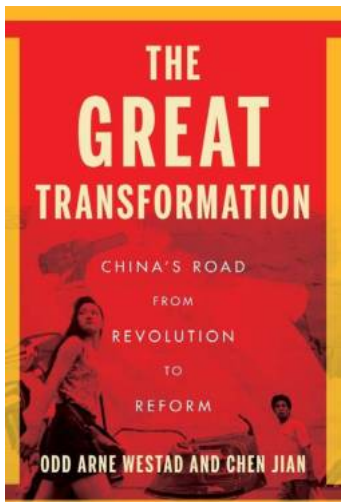


George Chen
Yale World Fellow '14
Managing Director & Co-Chair of Digital Practice,
The Asia Group

Ambassador Kurt Tong
Managing Partner, The Asia Group
Former U.S. Ambassador to the Asia-Pacific
Economic Cooperation (APEC), and Chief of
Mission for Hong Kong and Macau

*Dialogue on U.S.-China
Relations at a Crossroad*
Greenberg Distinguished Colloquium
In Collaboration with Yale Club of Beijing

2025.03.26



Jian Chen
Distinguished Global Network Professor of History,
New York University (NYU) Shanghai

Odd Arne Westad
Elihu Professor of History and Global Affairs,
Yale University

*The Great Transformation: China's
Road from Revolution to Reform*
Greenberg Distinguished Colloquium
"For Humanity" Lecture Series
In Collaboration with Royal Asiatic Society,
Beijing (RASBJ) and Yale Club of Beijing

2025.03.30



Darren Cai MBA '98
Founder & Managing Partner,
Sherpa Healthcare Partners

Siddharth Chatterjee
Resident Coordinator in China, United Nations

Dejing Dou PhD '04
Distinguished Professor, Fudan University
Chief Scientist, Beijing Electronic Digital & Intelligence

Jian Gao
Economist
Former Executive Vice President,
China Development Bank

Victor Gao MA '90, JD '93
Chairman, Yale Law School Association of China

Sean Huang MBA '05
CEO, Taikang Asset Management

Haitao Li PhD '98
Dean & Dean's Distinguished Chair Professor of
Finance, Cheung Kong Graduate School of Business

Gordon Liu
Dean, Institute for Global Health and Development,
Peking University

Martin Ma PhD '07
Founder & CEO, Happy Universe

Sally Shan MBA '97
Co-Founder & Chairman, AspenBridge Advisory

Helen Sun MAM '13
President, Yale Club of Beijing
Co-Founder & CEO, AspenBridge Advisory

Tina Tao MBA '10
President & Partner, Sinovation Ventures

Charles Wang PhD '00
Chairman, Shenzhen Dragon Pacific
Capital Management

Hang Yin PhD '04
Professor & Former Vice Dean, School of
Pharmaceutical Sciences, Tsinghua University

Selina Zhang MBA '04
Managing Director, Yale Healthcare Club of China

Jieyu Zou MPH '12
Partner, Lilly Asia Ventures

Yale U.S.-China 2025 Forum – Beijing
In Collaboration with Association of Chinese
Students and Scholars at Yale, Yale Club of Beijing,
Yale School of Management Greater China Club, and
Yale Venture Club

2025.04.15



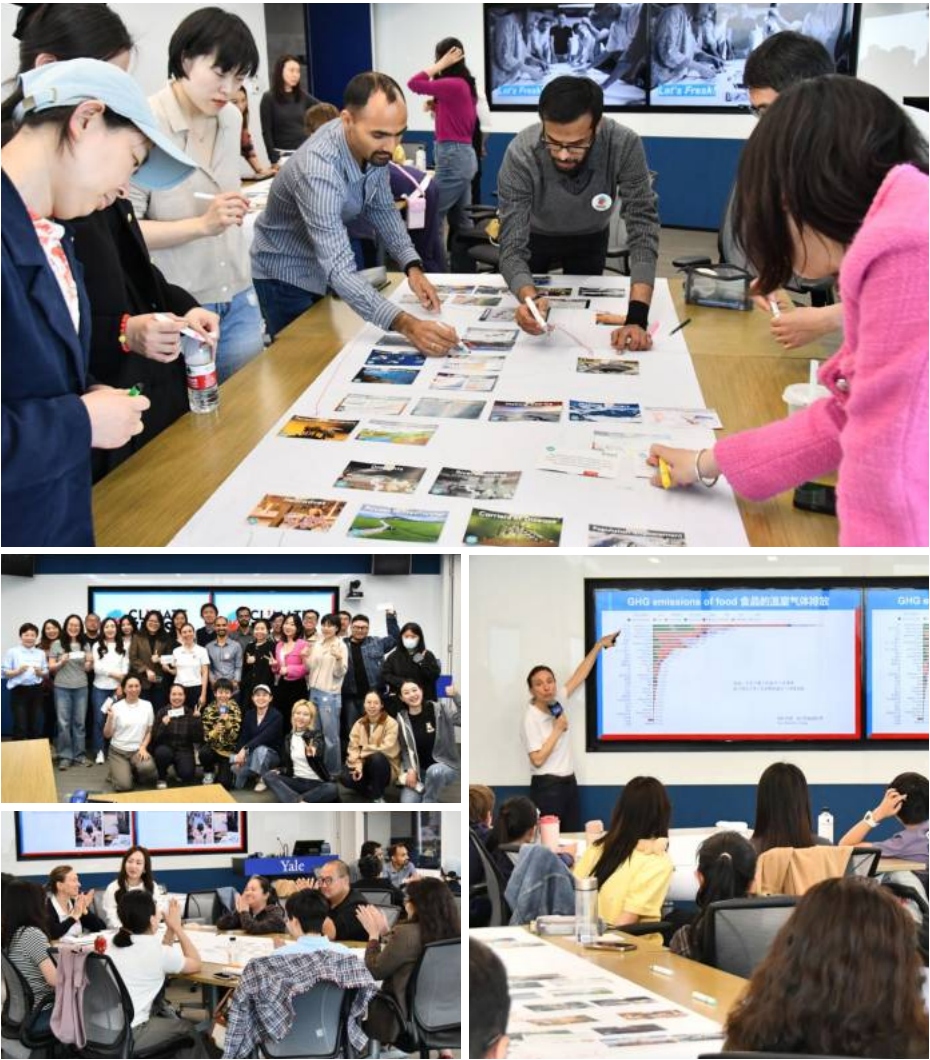
Volker Leppin
Horace Tracy Pitkin Professor of Historical Theology,
Yale University

Qiuling Li
Professor, School of Philosophy,
Renmin University of China

Ruorong Xu
Lecturer, School of Philosophy, Shaanxi Normal University

The Life of a Restless Saint
Yale University Press-Yale Center Beijing
“Find Your Next Read” Series
“For Humanity” Lecture Series
In Collaboration with Yale Club of Beijing

2025.04.19



Hortense Hallé-Yang
North China Representative, Climate Fresk

*“Climate Fresk”: A Transformational
Game for Understanding the Causes and
Effects of Climate Change*
In Collaboration with Climate Fresk

2025.04.20



Meng Li '10
Director of Curriculum, Teaching & Assessment
Center (CTAC); Director of High School,
Tsinglan School

*The Togetherness Toolkit:
Family Time Made Simple*
“For Humanity” Lecture Series
In Collaboration with Yale Club of Beijing

2025.04.23

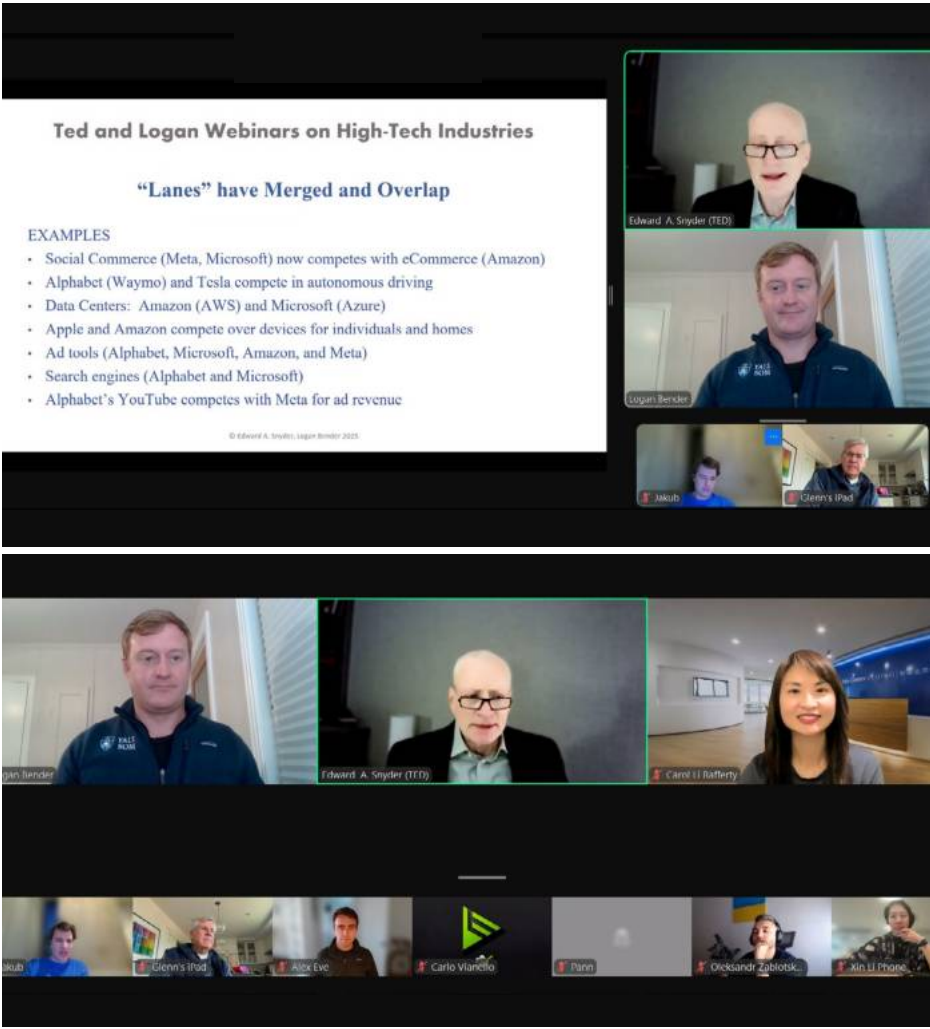


Lizhi Liu
Assistant Professor, McDonough School of Business,
Georgetown University

Tianguang Meng
Professor, Department of Political Science,
Tsinghua University

*From Click to Boom: The Political
Economy of E-Commerce in China*
**Princeton University Press-
Yale Center Beijing Ideas Series**
In Collaboration with Princeton University Press
China Office

2025.04.24



Logan Bender MBA '19
Technology Investor

Edward (Ted) Snyder
Former Dean & William S. Beinecke Professor of
Economics and Management, Yale School of
Management

The (Not So) Magnificent Seven?
In Collaboration with Yale School of Management and
Yale Club of Beijing

2025.04.26



Resty Fufunan '24
Yale Light Fellow, Middlebury in Beijing
Intern, Yale Center Beijing

Lucas Miner '24
Yenching Scholar,
Yenching Academy of Peking University

Carol Rafferty '00
Executive Director, Yale Center Beijing

Helen Sun MAM '13
President, Yale Club of Beijing
Co-Founder & CEO, AspenBridge Advisory

Gwendolyn Zahner PhD '83
Member, Northern China, Yale Alumni Schools
Committee (ASC)

*Yale College Admitted Student
Luncheon 2025*
In Collaboration with Yale Club of Beijing

2025.04.28



Mary Evelyn Tucker
Co-Director, Yale Forum on Religion and Ecology

John Grim
Co-Director, Yale Forum on Religion and Ecology

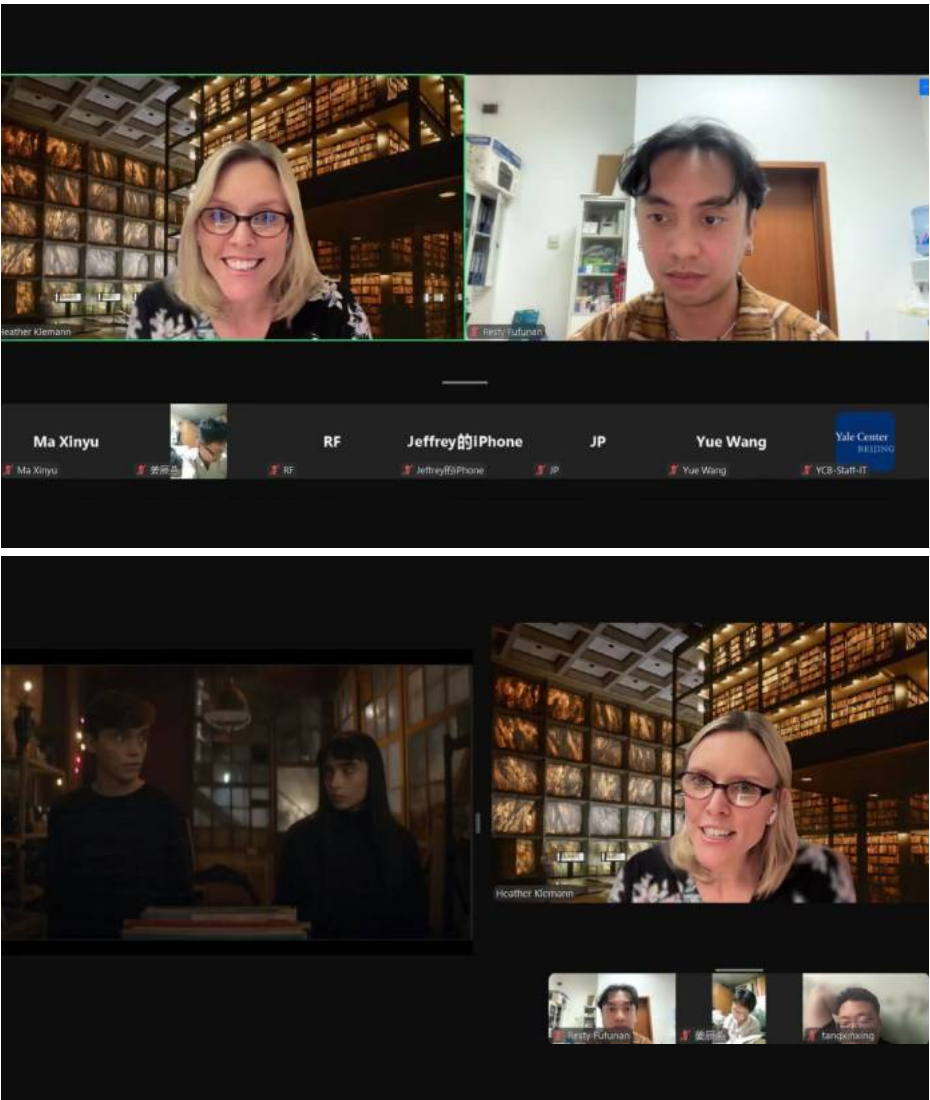
Xia Chen
Research Fellow, Institute of Philosophy,
Chinese Academy of Social Sciences

Zongxu (Hazim) Xie
Co-Founder, Vision 2061
Founder, The Miao

Binbin Wang
Yale World Fellow '23
Founder, Climate Future Global Innovation Lab (C
Force Lab), Institute of Carbon Neutrality,
Peking University

*Bridging Wisdom Traditions
with Ecological Renewal*
Greenberg Distinguished Colloquium
“For Humanity” Lecture Series
In Collaboration with Yale Forum on Religion and
Ecology, Institute of Carbon Neutrality at Peking
University and Yale Club of Beijing

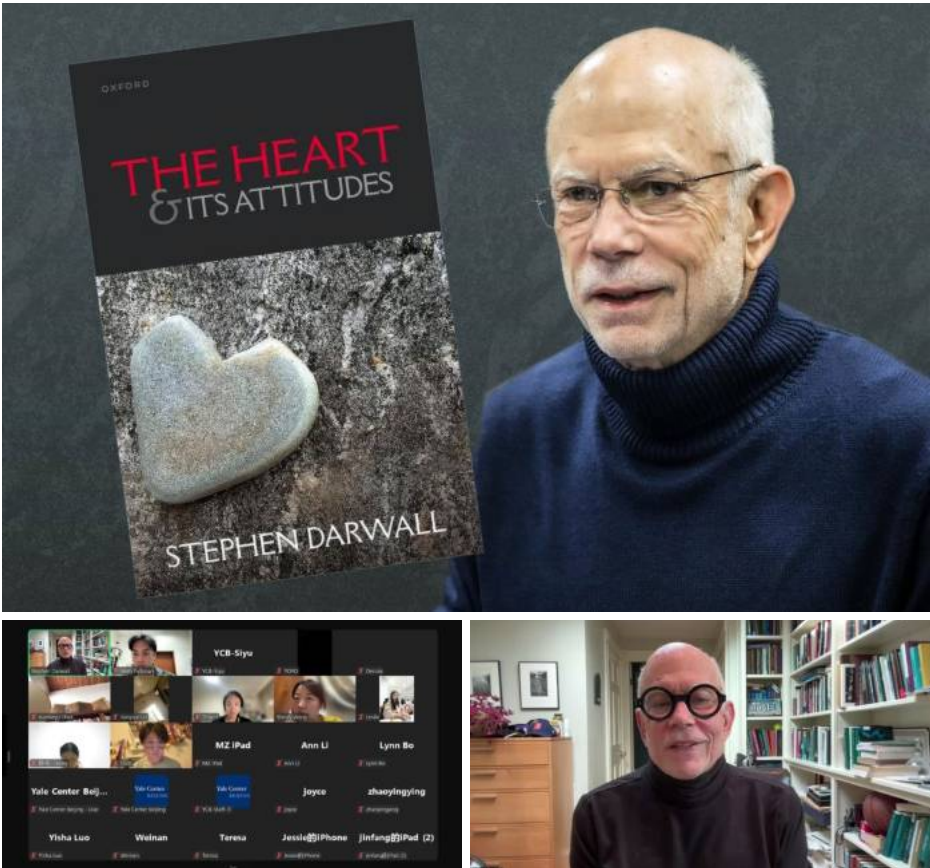
2025.05.06



Heather Klemann PhD '13
Senior Lecturer in English, Yale University

*Reality Bites:
Teenage Vampires from Buffy to Sasha*
“For Humanity” Lecture Series
In Collaboration with Yale Club of Beijing

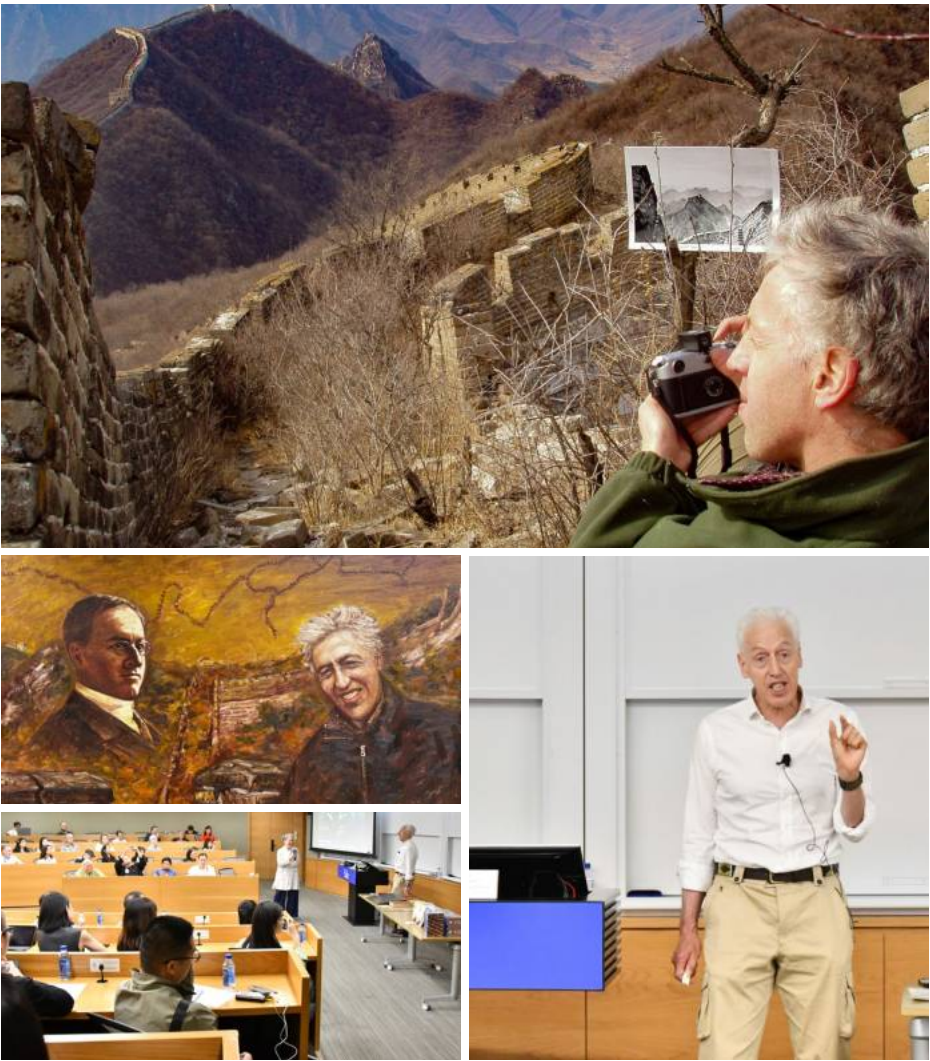
2025.05.07



Stephen Darwall
Andrew Downey Orrick Professor of Philosophy,
Yale University

*A Philosophical Journey from
Mind to Heart*
“For Humanity” Lecture Series
In Collaboration with Yale Club of Beijing

2025.05.14



William Lindesay
Founder, International Friends of The Great Wall

*The Great Wall of Two Williams:
From Two Journeys to
One Century Mission*
In Collaboration with Royal Asiatic Society,
Beijing (RASBJ) and Yale Club of Beijing

2025.05.17



Shulei Bi

Chinese President, Nova Academy

Li Cheng

Vice Principal, Beijing 101 Middle School

Allen Li

Director of College Guidance, Springboard International Bilingual School

Diana Li

Vice Principal, Beijing Private Huijia School

Linda Lin

Executive Director & Senior College Counselor, Hurtwood House (HD & HT) Schools

Jing Song

Assistant Principal, Middle School and High School (MSHS), Beijing International Bilingual Academy

Shi Wang

Vice Principal, Beijing No. 4 High School International Campus

Yue Zhao

Executive Director, International Curriculum Center, The High School Affiliated to Renmin University of China

*Navigating Global Education
in an Uncertain Era*

Hosted by Babazhenbang

2025.06.01



Cara Cheung

Assistant Director, Office of Development and Alumni Affairs, Yale School of Music

Katherine Darr

Director of Development and Alumni Affairs, Yale School of Music

José García-León

Henry and Lucy Moses Dean of Music, Yale School of Music

Chuhan Zhang BA/MM '18

Lecturer, China Academy of Art

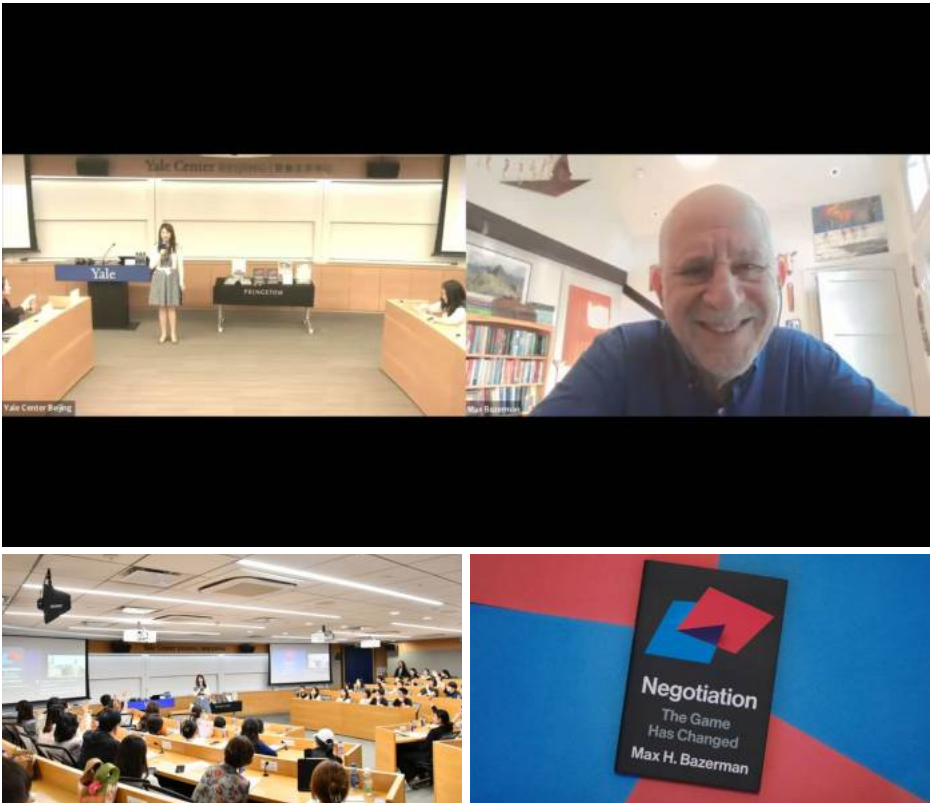
Ray Zhou MM '14, AD '15

Director, Admissions, Yale School of Music

Yale School of Music Beijing Concert

In Collaboration with Yale School of Music

2025.06.05



Max Bazerman
Jesse Isidor Straus Professor of Business
Administration, Harvard Business School

Negotiation: The Game Has Changed
**Princeton University Press-Yale Center Beijing
Ideas Series**
“For Humanity” Lecture Series
In Collaboration with Princeton University Press
China Office

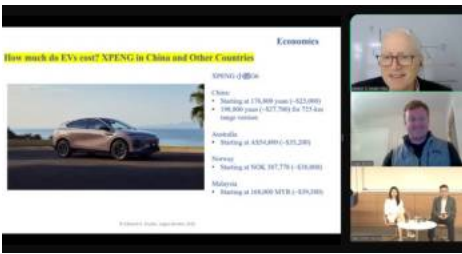
2025.06.09



Kun Liu
Assistant Professor Adjunct of Psychiatry,
Yale School of Medicine
Co-Founder & Research Director,
Brain Peace Science Foundation
Freddy Ramirez
Co-Founder & Executive President,
Brain Peace Science Foundation

*The 2025 Summer Research
Program on Embodied Cognition:
Asia-Pacific Briefings*

2025.06.09



Logan Bender MBA '19

Technology Investor

Brian Gu MBA '99

Vice Chairman & President, XPENG

Edward (Ted) Snyder

Former Dean & William S. Beinecke Professor of
Economics and Management,
Yale School of Management

*The New Economics of
Global Electric Vehicles (EV)*

In Collaboration with Yale School of Management

2025.06.10



Lynn Cooley

Dean, Yale Graduate School of Arts and Sciences
Vice Provost of Postdoctoral Affairs, Yale University

Mark Donovan

Director of Development and Alumni Relations,
Yale Graduate School of Arts and Sciences

Emma Zhao

Senior Associate Director, International Development,
Office of Development, Yale University

*Yale Graduate School of Arts and
Sciences Dean's Reception*

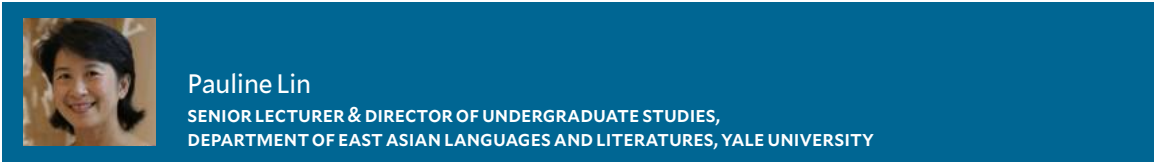
In Collaboration with Yale Graduate School of
Arts and Sciences, Yale Office of Development, and
Yale Club of Beijing

2025.06.13



Pauline Lin
Senior Lecturer & Director of Undergraduate
Studies, Department of East Asian Languages and
Literatures, Yale University

*An Early Chinese Imperial Park?
A Paradise for Afterlife?:
Reconsidering the Pit of the Waterfowls
in the First Emperor’s Necropolis*
In Collaboration with Yale Club of Beijing



“It was a pleasure to speak with such an engaging and knowledgeable audience about my research on early Chinese garden design and the Pit of Bronze Birds at the First Emperor’s Necropolis. I am deeply impressed by the way the Center’s team has cultivated such a vibrant hub for intellectual exchange.”

2025.06.15



Wei Che MA ’95
Executive Director, Multinational Corporations
Council for Carbon Neutrality (MNC50)
Jamil Liu MAM ’22
Co-Founder & General Manager, Meego Inc.
Martin Ma PhD ’07
Founder & CEO, Happy Universe
Helen Sun MAM ’13
President, Yale Club of Beijing
Co-Founder & CEO, AspenBridge Advisory

Mingrong Weng ’11
University & Careers Advisor,
International School of Beijing
*Yale Admitted Students Welcome
Reception & Alumni Sharing 2025*
In Collaboration with Association of Chinese
Students and Scholars at Yale, Yale Club of Beijing,
and Yale Graduate School Alumni Association

2025.06.16–06.19



Yuan Gong
Partner, HSG

Feng Li
Founding Partner, FreeS Fund

Yuan Liu
Partner, ZhenFund

Will Wang
Partner, BAI Capital

Yao Wu
Partner, K2 Venture Partners

Emma Yin
Partner, ZhenFund

Sean Zhang
Head, Investor Relations, JD.com

Chaonan Zhou
Chairman, Range Technology Development

Yale China Trek 2025

2025.06.16–06.21



Ermo Chen
Boya Postdoctoral Fellow, Institute for Global Health and Development, Peking University
Chief Scientist, Planetary Health Axis System (PHAS) Project

Shanquan Chen
Assistant Professor, Department of Population Health, Faculty of Epidemiology and Population Health, London School of Hygiene & Tropical Medicine

Xi Chen
Associate Professor of Public Health (Health Policy), Yale School of Public Health

Zhihan Cui
Assistant Professor, Institute for Global Health and Development, Peking University

Karen Eggleston
Senior Fellow, Freeman Spogli Institute for International Studies, Stanford University

Fangli Geng
Assistant Professor, Department of Health Services, Policy & Practice, School of Public Health, Brown University

*Peking University-Yale University
“Digital Health” Economics Summer
Institute 2025*
In Collaboration with the Institute for Global Health and Development at Peking University

2025.06.16-06.21



Cheng Huang

Professor, Institute for Global Health and Development, Peking University

Yuan Huang

Assistant Professor of Biostatistics, Yale School of Public Health

Huajie Jin

Senior Lecturer & Deputy Head, King's Health Economics, King's College London

Jianbo Lei

Founding Executive Director, Center for Medical Informatics, Peking University
Research Fellow, Institute for Global Health and Development, Peking University

Xiaoyan Lei

Professor, National School of Development and Institute for Global Health and Development, Peking University

Gordon Liu

Dean, Institute for Global Health and Development, Peking University

Chenchong Lv

Founder & Chairman, Beijing Yizhun AI Technology

Yuhang Pan

Assistant Professor, Institute for Global Health and Development, Peking University

Zhirong Shen

Vice President, Global Health of Translational Discovery, Research and Medicine, BeiGene

Sean Sylvia

Associate Professor of Health Policy and Management, Gillings School of Global Public Health, University of North Carolina at Chapel Hill

Lijun Wang

Director, Office of Death Registration and Mortality Surveillance, National Center for Chronic and Non-Communicable Disease Control and Prevention, Chinese Center for Disease Control and Prevention

Ming Xu

Dean, Department of Global Health, School of Public Health, Peking University
Associate Dean, Institute for Global Health and Development, Peking University

Jianan Yang

Assistant Professor, Institute for Global Health and Development, Peking University

*Peking University-Yale University
“Digital Health” Economics Summer
Institute 2025*

In Collaboration with the Institute for Global Health and Development at Peking University

2025.06.18



Xiaoxi Cheng

Vice Dean & Professor, School of Architecture, Tsinghua University
Former Visiting Scholar, Yale School of Architecture

Boyuan Zhang MARCH '15

Senior Associate, Robert A.M. Stern Architects

*Cross-Cultural Interpretation of
Chinese Architecture: Past & Present*
“For Humanity” Lecture Series
In Collaboration with Yale Club of Beijing

2025.06.19



Zhiwu Chen PhD '90
Chair & Cheng Yu-Tung Professor in Finance,
Hong Kong University Business School

Ravi Dhar
Co-Faculty Leader, Yale Program on
Stakeholder Innovation and Management
George Rogers Clark Professor of Management
and Marketing, Yale School of Management

Jon Iwata
Practice Leader, Yale Program on Stakeholder
Innovation and Management
Lecturer in the Practice of Management,
Yale School of Management

Ying Zhang
Associate Dean & Professor of Marketing
and Behavioral Science, Guanghua School of
Management, Peking University

*The Future of Stakeholder Innovation:
Creating Long-Term Value in an Era
of AI and Geopolitical Shifts*
In Collaboration with Yale Program on Stakeholder
Innovation and Management

2025.06.25



Daniel Markovits '91, JD '00
Guido Calabresi Professor of Law, Yale Law School

The Meritocracy Trap
“For Humanity” Lecture Series
In Collaboration with Yale Club of Beijing

2025.06.27



Martina Droth
Paul Mellon Director, Yale Center for British Art

Xinyue Guo
Staff Worker, Digital and Information Department,
The Palace Museum
Assistant Curator, The Exhibition “Rejoicing in
Woods and Springs: A Journey Through Garden
Cultures in China and the Wider World”



“It was inspiring to see outstanding works from diverse cultures come together at the Palace Museum and be so warmly received. It was an honor to visit Beijing and to tour the Palace Museum as part of our exciting exhibition collaboration.

I’m deeply grateful to Yale Center Beijing for organizing such a thoughtful visit, and to our enthusiastic alumni community—your warmth and engagement were truly impressive. I look forward to welcoming you in New Haven.”

2025.06.28



Jian Gao
Economist
Former Executive Vice President,
China Development Bank

*Navigating Economic and Financial
Challenges in a Changing World*
In Collaboration with Yale Club of Beijing and
Cambridge Alumni Club of China

**YALE CENTER BEIJING
ADVISORY COMMITTEE**



Neil Shen '92
Chair*
*Founding & Managing Partner
HSG*

* Executive Council



Jane Sun*
*CEO & Director
Trip.com Group Limited*



Jing Tsu
*Jonathan D. Spence
Professor of East Asian
Languages and Literatures &
Comparative Literature
Yale University*



Qiang (Victor) Wang*
*Co-Founder
Zhenfund
Co-Founder
New Oriental Education &
Technology Group*



**Mark (Haoyong)
Yang MS '01**
*CEO
CARS Group*



Laura Cha*
*Senior Advisor to the Board
Hong Kong Exchanges and
Clearing Ltd.*



Chengyu Fu*
*Former Chairman
China Petroleum & Chemical
Corporation (Sinopec)*



Maurice Greenberg
*Chairman & CEO
Starr Insurance Companies*



Jane Xin He
*Managing Partner
Atlantic Blue Sky Ltd.*



Yuanqing Yang*
*Chairman & CEO
Lenovo*



Bo Zhang
*Managing Partner
WCG Capital*



**Lei Zhang MBA '02,
MA '02**
*Founder & CEO
Hillhouse Capital
Management Group, Ltd.*



Yichen Zhang
*Chairman & CEO
CITIC Capital Holdings
Limited*



Carla Hills LLB '58*
*Chair & CEO
Hills & Company
International Consultants
Former U.S. Trade
Representative
Former Secretary
U.S. Department of
Housing and Urban
Development*



Brad Huang MBA '90*
*Managing Director
Lotus Capital*



Xing Liu*
*Partner
HSG*



Huateng Ma*
*Core Founder
Chairman of the Board & CEO
Tencent*



Leon Meng MPPM '97
*Co-Chair
Yale School of Management
Greater China Board of Advisors
Chairman & CEO
Ascendent Capital Partners*



Kevin Zhang MBA '94
*Co-Chair
Yale School of Management
Greater China Board of Advisors
Founder & CIO
Hereditas Capital Management*

YALE CENTER BEIJING TEAM



Carol Rafferty '00
Executive Director



Joyce Wang
Deputy Director



Devin Lau '09
Associate Director



Liu Yang
Associate Director



Siyu Wang GBS '23
Operations Coordinator



Xinfei Zhang
Communications &
Program Coordinator



Jingyi Zhang
Administrative &
Program Coordinator

FOLLOW US

 centerbeijing.yale.edu

 [YaleCenterBJ](#)

 weibo.com/yaleuniversity

 weibo.com/yalecenterbj

 [@yalecenterbeijing](#)

 [Yale Center Beijing](#)

 [Yalecenterbeijing](#)

 [YaleCenterBJ](#)

 [YaleCenterBJ](#)

 [耶鲁北京中心 \(Yale Center Beijing in Chinese\)](#)

 [耶鲁北京中心 Yale](#)



Chloë Starr

PROFESSOR OF ASIAN CHRISTIANITY AND THEOLOGY,
YALE DIVINITY SCHOOL

“I’ve just completed a week-long workshop for graduate participants from across China at YCB. The YCB staff were exceptional in helping us plan and organize the practical side of the workshop, from meals to transport to emergency help for a stranded participant.

The friendly and efficient staff, together with unrivalled facilities for activities and presentations, enabled a level of engagement with the material and each other that I’ve rarely encountered in China. The participants are already asking about next year, and the feedback has been effusive—I’m profoundly grateful to the staff for enabling a workshop that would have been difficult to hold at present in a university setting.”



Jonathan Feinstein

JOHN G. SEARLE PROFESSOR OF ECONOMICS AND MANAGEMENT,
YALE SCHOOL OF MANAGEMENT

“Yale Center Beijing hosted a wonderful event for me in November 2024. It was a full room, and I believe around 2,000 more online. I gave a presentation about my work on creativity, featuring my new book *Creativity in Large-Scale Contexts*, and we had a very active & engaging Q&A afterwards, followed by a book signing.

It was a beautiful space (and a nice day!) and nice, smooth AV and setup. The Center staff also facilitated my travel and accommodations, making the whole experience excellent. They also posted my talk on YouTube, which is great. Thank you to Carol and her team!”



George Chen

YALE WORLD FELLOW '14
PARTNER & CO-CHAIR OF DIGITAL PRACTICE, THE ASIA GROUP

“Every time I am back to Yale Center Beijing, I feel like being back home, our home for all Yalies in China. Although it’s far away from New Haven by distance, our connections with the mothership remain stronger than ever through many important programs and activities that are held around the year at Yale Center Beijing.

This is not just physical space for Yale friends and partners to get together in Beijing but also a meeting point in heart for great minds alike. Everyone has his or her own good memory about Yale Center Beijing to tell. I met my mentees here and I made new business friends after my talk at Yale Center Beijing. Yale Center Beijing is the way how we carry on Yale legacy and make new connections for the globe.”



Clark Wu '27

BUSINESS MANAGER, THE YALE SPIZZWINKS(?)

“Bringing the Yale Spizzwinks(?) to Yale Center Beijing was a true highlight of our tour. The Center’s team went above and beyond with marketing support and made coordination effortless.

One of our members even reunited with their former FroCo (First-Year Counselor) — now a Center intern! I highly recommend that young groups visiting China connect with the Center; it’s a vibrant hub for Yale abroad.”

Yale Center Beijing

36th Floor, Tower B

International Finance Center (IFC)

No. 8 Jianguomenwai Avenue

Chaoyang District, Beijing, China 100022

EMAIL: yalecenterbeijing@yale.edu